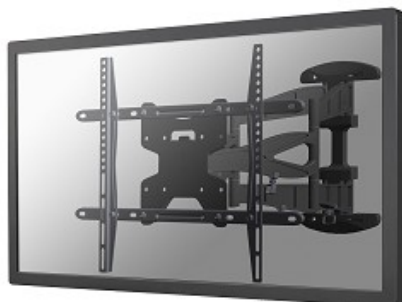


LED-W550

NEWSTAR LCD/LED/PLASMA WALL MOUNT

The LED-W550 is a full swing wall mount for LCD/Plasma screens up to 60" (150 cm).



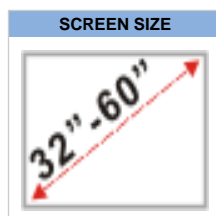
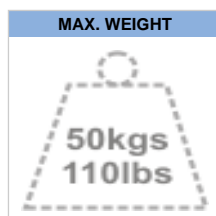
The NewStar LCD/LED/PLASMA TV wall mount allows you to mount a LCD, LED or PLASMA TV to any wall. Cause of the flexible hole pattern of this system is this wall mount useable for almost every TV up to 60 inches. You are able to tilt and swivel your screen very easily.

This wall mount is easy to install by using the VESA hole pattern at the rear side of your TV. This wall mount can be used when the maximum distance between the holes (left to right) is 60 cm. The upper and lower holes allow a maximum distance of 40 cm.

This Plasma TV wall mount is made of aluminium and is mountable to any wall.

SPECIFICATIONS

Color	Black
Warranty	5 year
Max. weight	50
Screen size	32 - 60"
VESA maximum	600x400 mm
VESA minimum	100x100 mm
Screens	1
Swivel	120°
Tilt	12°
Distance to wall	5 - 50 cm
EAN code	8717371443740



LED-W550

NEWSTAR LCD/LED/PLASMA WALL MOUNT

