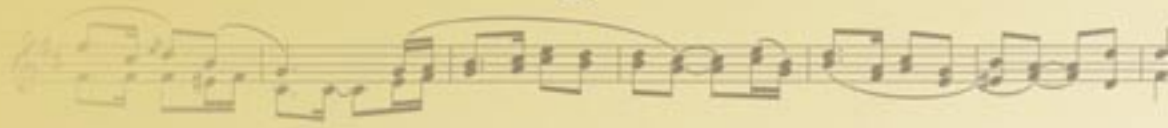


**NÜVÖ®**

The Sound of LiVing.



AccentPLUS® Speakers



**Discover Your Home's Unique Accent.**

AccentPLUS<sup>®</sup> speakers by NuVo create a soundscape as individual as your style.



**ONE**

**AccentPLUS<sup>®</sup> 1**



TWO

AccentPLUS®<sub>2</sub>

# AccentPLUS<sup>®</sup>1

*Uncompromisingly clean sound at a price that's music to your ears.*

Acoustic clarity doesn't have to come at a high price. For an extraordinary listening experience, NuVo offers the AccentPLUS<sup>®</sup>1 in-wall and in-ceiling speakers. AccentPLUS<sup>®</sup>1 speakers deliver crisp, clear audio throughout your home, perfect for casual listening and background ambience.

For impressively full, impeccably clean sound and an audio experience that is never compromised, you can trust AccentPLUS<sup>®</sup>1 speakers to fill every room of your home with bright, rich music.



*A durable, butyl rubber surround provides years of high performance. The polypropylene cone delivers superior sound reproduction and the pivoting silk-domed tweeter produces precise, high-range tones.*

## **AccentPLUS<sup>®</sup>1 Features:**

- Durable butyl rubber surround
- 6.5 or 8 inch Polypropylene cone
- 30° pivoting silk-domed tweeter
- 12 dB crossover
- Anti-debris basket
- Paint friendly, low-profile aluminum grill



# ONE

# AccentPLUS®1 Outdoor

***Enjoy the sound of living everywhere you call home...  
inside and out.***

Discover what makes the great outdoors so great. AccentPLUS®1 Outdoor loudspeakers from NuVo deliver an outstanding performance in any environment, so you can take the sound of living to your patio, sunroom, or pool...anywhere you enjoy outdoor living at home.

## **AccentPLUS®1 Outdoor Features:**

- Weather and UV-resistant for use in all climates
- Polyethylene cabinets with honeycomb array for increased rigidity
- Bituminous acoustic damping inner lining
- 6.5 or 8 inch Polypropylene cone
- Polyetherimide tweeter
- Steel U-bracket for wall mount and attachable bookshelf foot



*The weather-resistant, UV-resistant design allows you to enjoy the legendary AccentPLUS®1 sound in the outdoor areas of your home. Inside and out, on-wall mount or bookshelf placement, the unique honeycomb cabinet design will strengthen output, enriching your surroundings with powerful audio.*



# AccentPLUS® 2

***Unparalleled sound quality for flawless performance, every time.***

For the truly discriminating listener, NuVo presents the opulent sound quality of the AccentPLUS® 2 in-wall and in-ceiling speakers.

AccentPLUS® 2 speakers bathe you in vivid, pristine sound with a richer bass response and enhanced performance. From smooth, dulcet highs to clean, precise mid-ranges to warm, robust bass tones, you'll hear each distinct note with astonishing clarity. Tailor-made for detailed sound execution at any volume and for an unparalleled listening experience in every area of your home.



*The rigid DuPont™ Kevlar® cone, with a special long throw magnet, composes an incredibly deep bass response, increasing intensity and heightening output. Pivoting titanium tweeter creates ultra crisp high definition for critical listening.*

## **AccentPLUS® 2 Features:**

- Durable butyl rubber surround
- 6.5 or 8 inch DuPont™ Kevlar® cone
- 30° pivoting titanium tweeter
- Enhanced 12 dB crossover
- Anti-debris basket
- Long throw magnet
- Paint friendly, low-profile aluminum grill



O  
W  
I  
T

# AccentPLUS<sup>®</sup>2 Outdoor

***Because discriminating listeners expect sound quality worthy of a standing ovation, even outdoors.***

Imagine all the enjoyment of an outdoor symphony, in the comfort and seclusion of your own private sanctuary. That's the magic you'll discover with AccentPLUS<sup>®</sup>2 Outdoor loudspeakers by NuVo. AccentPLUS<sup>®</sup>2 Outdoor speakers take the uncompromised sophistication of vivid, precise musical enjoyment where it has never gone before—your back yard.



## **AccentPLUS<sup>®</sup>2 Outdoor Features:**

- Weather and UV-resistant, for use in all climates
- Polyethylene cabinets with honeycomb array for increased rigidity
- Bituminous acoustic damping inner lining
- 6.5 or 8 inch Dupont™ Kevlar<sup>®</sup> cone
- Titanium tweeter
- Long throw magnet for abundant output
- Steel U-bracket for wall mount and attachable bookshelf foot

*Enjoy the abundant output of the legendary AccentPLUS<sup>®</sup>2 sound in the outdoor areas of your home. A DuPont™ Kevlar<sup>®</sup> cone for extended, deep bass and a honeycomb cabinet design with an acoustic damping lining, create an intense audio output that brings the concert home.*



# AccentPLUS® Rock

***This is one speaker that really knows how to rock.***

NuVo's legendary AccentPLUS® speakers deliver their signature sound in an ingenious disguise that's right at home in nature. Create a pure, clean soundscape in your garden with sandstone or granite speakers that are impervious to moisture and temperature extremes. Experience the same powerful audio of AccentPLUS®1 outdoors as you enjoy indoors, without disturbing your garden's beauty. Indulge your senses with NuVo's rock speakers.



***Realistic, contoured rock finish in two natural shades blends into any landscape. A highly discreet grill leaves only the question of origin for such a powerful outdoor audio adventure.***





# The Rock

---

**AccentPLUS® Rock Features:**

- 6.5 or 8 inch Polypropylene cone
- Realistic, contoured rock finish
- Weather and UV-resistant design
- Immune to temperature and moisture extremes
- Acoustically inert
- Highly discreet grill
- Available in sandstone or granite to naturally blend into any outdoor setting
- Direct-burial rated cable pigtail





## AccentPLUS<sup>®</sup>1



SYSTEM	NV-AP16C	NV-AP16CS	NV-AP18C	NV-AP16I	NV-AP18I
<b>Description:</b>	6.5" Ceiling Speaker with Co-axial Pivoting Tweeter	6.5" Stereo Ceiling Speaker with Dual Fixed Tweeter	8.0" Ceiling Speaker with Co-axial Pivoting Tweeter	6.5" In-Wall Speaker with Pivoting Tweeter	8.0" In-Wall Speaker with Pivoting Tweeter
<b>Power Rating:</b>	50W	50W	60W	50W	60W
<b>Impedance:</b>	8 ohm	8 ohm x 2	8 ohm	8 ohm	8 ohm
<b>Efficiency:</b>	91dB 1W/1M	91dB 1W/1M	92dB 1W/1M	91dB 1W/1M	92dB 1W/1M
<b>Frequency Response:</b>	50Hz-20kHz	50Hz-20kHz	50Hz-20kHz	50Hz-20kHz	50Hz-20kHz
<b>Tweeter Crossover:</b>	12dB / Octave; 4kHz	12dB / Octave; 4kHz	12dB / Octave; 4kHz	12dB / Octave; 4kHz	12dB / Octave; 4kHz
<b>Woofers Crossover:</b>	None	None	None	12dB / Octave; 4kHz	12dB / Octave; 4kHz
<b>Dimensions (HxWxD):</b>	9" Diameter x 3.75" (228mm Diameter x 96mm)	9" Diameter x 3.75" (228mm Diameter x 96mm)	10.75" Diameter x 4.375" (272mm Diameter x 112mm)	12" x 8.75" x 3.75" (306mm x 220mm x 95mm)	14.125" x 10" x 4" (358mm x 256mm x 101mm)
<b>Cutout Dimensions:</b>	8" (204mm)	8" (204mm)	9.75" (248mm)	11.125" x 7.75" (284mm x 198mm)	13.25" x 9.125" (336mm x 232mm)
<b>Depth:</b>	3" (75mm)	3" (75mm)	3.375" (86mm)	3" (75mm)	3.375" (86mm)

### WOOFER

<b>Magnet:</b>	10 oz (80mm x 30mm x 15mm)	10 oz (80mm x 3mm x 15mm)	20 oz (100 mm x 45mm x 15mm)	10 oz (80mm x 30mm x 15mm)	20 oz (100mm x 45mm x15mm)
<b>Voice Coil:</b>	1.0" (25mm) Polyimide Film	1.0" (25mm) Polyimide Film	1.5" (38mm) Polyimide Film	1.0" (25mm) Polyimide Film	1.5" (38mm) Polyimide Film
<b>Cone:</b>	Etched Polypropylene	Etched Polypropylene	Etched Polypropylene	Etched Polypropylene	Etched Polypropylene
<b>Surround:</b>	Butyl Rubber	Butyl Rubber	Butyl Rubber	Butyl Rubber	Butyl Rubber
<b>Dust Cover:</b>	Polypropylene	Polypropylene	Polypropylene	Polypropylene	Polypropylene

### TWEETER

<b>Magnet:</b>	Neodymium	Neodymium	Neodymium	Neodymium	Neodymium
<b>Dome:</b>	20mm Silk	2 x 13mm Mylar	25mm Silk	20mm Silk	25mm Silk
<b>Type:</b>	Pivoting 30 degrees	Fixed Position	Pivoting 30 degrees	Pivoting 30 degrees	Pivoting 30 degrees

Uncompromisingly clean sound at a price that's music to your ears.

# Specifications



## AccentPLUS® 2

SYSTEM	NV-AP26C	NV-AP26CS	NV-AP28C	NV-AP26I	NV-AP28I
<b>Description:</b>	6.5" Ceiling Speaker with Co-axial Pivoting Tweeter	6.5" Stereo Ceiling Speaker with Dual Fixed Tweeter	8.0" Ceiling Speaker with Co-axial Pivoting Tweeter	6.5" In-Wall Speaker with Pivoting Tweeter	8.0" In-Wall Speaker with Pivoting Tweeter
<b>Power Rating:</b>	100W	100W	120W	100W	120W
<b>Impedance:</b>	8 ohm	8 ohm x 2	8 ohm	8 ohm	8 ohm
<b>Efficiency:</b>	91dB 1W/1M	91dB 1W/1M	92dB 1W/1M	91dB 1W/1M	92dB 1W/1M
<b>Frequency Response:</b>	50Hz-20kHz	50Hz-20kHz	40Hz-20kHz	50Hz-20kHz	40Hz-20kHz
<b>Tweeter Crossover:</b>	12dB / Octave; 4kHz	12dB / Octave; 4kHz	12dB / Octave; 3kHz	12dB / Octave; 4kHz	12dB / Octave; 3kHz
<b>Woofer Crossover:</b>	12dB / Octave; 4kHz	None	12dB / Octave; 3kHz	12dB / Octave; 4kHz	12dB / Octave; 3kHz
<b>Dimensions (HxWxD):</b>	9" Diameter x 3.75" (228mm Diameter x 96mm)	9" Diameter x 3.75" (228mm Diameter x 96mm)	10.75" Diameter x 4.375" (272mm Diameter x 112mm)	12" x 8.75" x 3.75" (306mm x 220mm x 95mm)	14.125" x 10" x 4" (358mm x 256mm x 101mm)
<b>Cutout Dimensions:</b>	8" (204mm)	8" (204mm)	9.75" (248mm)	11.125" x 7.75" (284mm x 198mm)	13.25" x 9.125" (336mm x 232mm)
<b>Depth:</b>	3" (75mm)	3" (75mm)	3.375" (86mm)	3" (75mm)	3.375" (86mm)
<b>WOOFER</b>					
<b>Magnet:</b>	10 oz (80 x 30 x 15mm)	10 oz (80 x 30 x 15mm)	20 oz (100 x 45 x 15mm)	10 oz (80 x 30 x 15mm)	20 oz (100 x 45 x 15mm)
<b>Voice Coil:</b>	1.0" (25mm) Polyimide Film	1.0" (25mm) Polyimide Film	1.5" (38mm) Polyimide Film	1.5" (25mm) Polyimide Film	1.5" (38mm) Polyimide Film
<b>Cone:</b>	DuPont™ Kevlar®	DuPont™ Kevlar®	DuPont™ Kevlar®	DuPont™ Kevlar®	DuPont™ Kevlar®
<b>Surround:</b>	Butyl Rubber	Butyl Rubber	Butyl Rubber	Butyl Rubber	Butyl Rubber
<b>Dust Cover:</b>	Polypropylene	Polypropylene	Polypropylene	Polypropylene	Polypropylene
<b>TWEETER</b>					
<b>Magnet:</b>	Neodymium	Neodymium	Neodymium	Neodymium	Neodymium
<b>Dome:</b>	20mm Titanium	2 x 13mm Mylar	25mm Titanium	20mm Titanium	25mm Titanium
<b>Type:</b>	Pivoting 30 degrees	Fixed Position	Pivoting 30 degrees	Pivoting 30 degrees	Pivoting 30 degrees



# Specifications



## AccentPLUS<sup>®</sup> 1 Outdoor

SYSTEM	NV-AP160W (White) NV-AP160B (Black)	NV-AP160SW NV-AP160SB	NV-AP180W NV-AP180B	NV-AP180SW NV-AP180SB
<b>Description:</b>	6.5" Outdoor Loudspeaker	6.5" Stereo Outdoor Loudspeaker	8" Outdoor Loudspeaker	8" Stereo Outdoor Loudspeaker
Power Rating:	50W	40W x 2	80W	50W x 2
Impedance:	8 ohm	8 ohm x 2	8 ohm	8 ohm x 2
Efficiency:	88dB 1W/1M	88dB 1W/1M	90dB 1W/1M	90dB 1W/1M
Frequency Response:	60Hz-20kHz +/-3dB	60Hz-20kHz +/-3dB	50Hz-20kHz +/-3dB	50Hz-20kHz +/-3dB
Tweeter Crossover:	12dB	12dB	12dB	12dB
Woofer Crossover:	N/A	N/A	N/A	N/A
Cabinet Material:	Mineral Filled Polyethylene	Mineral Filled Polyethylene	Mineral Filled Polyethylene	Mineral Filled Polyethylene
Grill Material:	Powder Coated Aluminum	Powder Coated Aluminum	Powder Coated Aluminum	Powder Coated Aluminum
Bracket Material:	Powder Coated Steel	Powder Coated Steel	Powder Coated Steel	Powder Coated Steel
Dimension: (HxWxD)	13" x 7.625" x 7.5" (330mm x 193mm x 190mm)	13" x 7.625" x 7.5" (330mm x 193mm x 190mm)	15" x 9.5" x 10" (382mm x 240mm x 258mm)	15" x 9.5" x 10" (382mm x 240mm x 258mm)
Depth w/Bracket:	8" (205mm)	8" (205mm)	9.75" (250mm)	9.75" (250mm)
Weight (Unit):	7.50 lbs (3.40kg)	7.50 lbs (3.40kg)	10.50 lbs (4.80kg)	10.50 lbs (4.80kg)
<b>WOOFER</b>				
Magnet Structure:	Ferrite, 13oz (370g) Flat Back Plate	Ferrite, 13oz (370g) Flat Back Plate	Ferrite, 17oz (480g) Flat Back Plate	Ferrite, 17oz (480g) Flat Back Plate
Voice Coil:	1" (25mm) Polyimide Film	1" (25mm) Polyimide Film	1.5" (38mm) Polyimide Film	1.5" (38mm) Polyimide Film
Cone:	6.5" (165mm) Polypropylene	6.5" (165mm) Polypropylene	8" (203mm) Polypropylene	8" (203mm) Polypropylene
Surround:	Butyl Rubber	Butyl Rubber	Butyl Rubber	Butyl Rubber
Dust Cover:	Polypropylene	Polypropylene	Polypropylene	Polypropylene
<b>TWEETER</b>				
Magnet:	Neodymium	Neodymium	Neodymium	Neodymium
Dome:	PEI (Polyetherimide), .75" (19mm)	PEI (Polyetherimide), .75" (19mm)	PEI (Polyetherimide), 1" (25mm)	PEI (Polyetherimide), 1" (25mm)
Type:	Fixed Position	Fixed Position	Fixed Position	Fixed Position





## AccentPLUS® 2 Outdoor

SYSTEM	NV-AP260W (White) NV-AP260B (Black)	NV-AP260SW NV-AP260SB	NV-AP280W NV-AP280B	NV-AP280SW NV-AP280SB
Description:	6.5" Outdoor Loudspeaker	6.5" Stereo Outdoor Loudspeaker	8" Outdoor Loudspeaker	8" Stereo Outdoor Loudspeaker
Power Rating:	50W	40W x 2	100W	50W x 2
Impedance:	8 ohm	8 ohm x 2	8 ohm	8 ohm x 2
Efficiency:	89dB 1W/1M	89dB 1W/1M	91dB 1W/1M	91dB 1W/1M
Frequency Response:	55Hz-20kHz +/-3dB	55Hz-20kHz +/-3dB	45Hz-20kHz +/-3dB	45Hz-20kHz +/-3dB
Tweeter Crossover:	12dB	12dB	12dB	12dB
Woofer Crossover:	N/A	N/A	N/A	N/A
Cabinet Material:	Mineral Filled Polyethylene	Mineral Filled Polyethylene	Mineral Filled Polyethylene	Mineral Filled Polyethylene
Grill Material:	Powder Coated Aluminum	Powder Coated Aluminum	Powder Coated Aluminum	Powder Coated Aluminum
Bracket Material:	Powder Coated Steel	Powder Coated Steel	Powder Coated Steel	Powder Coated Steel
Dimension: (HxWxD)	13" x 7.625" x 7.5" (330mm x 193mm x 190mm)	13" x 7.625" x 7.5" (330mm x 193mm x 190mm)	15" x 9.5" x 10" (382mm x 240mm x 258mm)	15" x 9.5" x 10" (382mm x 240mm x 258mm)
Depth w/Bracket:	8" (205mm)	8" (205mm)	9.75" (250mm)	9.75" (250mm)
Weight (Unit):	7.50 lbs (3.40kg)	7.5 lbs (3.40kg)	10.50 lbs (4.80kg)	10.50 lbs. (4.80kg)
<b>WOOFER</b>				
Magnet Structure:	Ferrite, 13oz (370g) Extended Back Plate	Ferrite, 13oz (370g) Extended Back Plate	Ferrite, 17oz (480g) Extended Back Plate	Ferrite, 17oz (480g) Extended Back Plate
Voice Coil:	1" (25mm) Polyimide Film	1" (25mm) Polyimide Film	1.5" (38mm) Polyimide Film	1.5" (38mm) Polyimide Film
Cone:	6.5" (165mm) DuPont™ Kevlar®	6.5" (165mm) DuPont™ Kevlar®	8" (203mm) DuPont™ Kevlar®	8" (203mm) DuPont™ Kevlar®
Surround:	Butyl Rubber	Butyl Rubber	Butyl Rubber	Butyl Rubber
Dust Cover:	Polypropylene	Polypropylene	Polypropylene	Polypropylene
<b>TWEETER</b>				
Magnet:	Neodymium	Neodymium	Neodymium	Neodymium
Dome:	Titanium .75" (19mm)	Titanium .75" (19mm)	Titanium 1" (25mm)	Titanium 1" (25mm)
Type:	Fixed Position	Fixed Position	Fixed Position	Fixed Position

Unparalleled sound quality for flawless performance, every time.



# Specifications

## AccentPLUS® Rock



### SYSTEM

**NV-AP18RS (Sandstone)**  
**NV-AP18RG (Granite)**

**NV-AP16RS**  
**NV-AP16RG**

Description:	8" Rock Loudspeaker Mono	6.5" Rock Loudspeaker Mono
Power Rating:	100W	50W
Impedance:	8 ohm	8 ohm
Efficiency:	91dB 1W/1M	88dB 1W/1M
Frequency Response:	45Hz-20kHz +/-3dB	60Hz-20kHz +/-3dB
Tweeter Crossover:	12dB	12dB
Woofer Crossover:	12dB	12dB
Dimensions (HxWxD):	13.5" x 13.5" x 1 2" (340mm x 340mm x 300mm)	10.5" x 11" x 9" (165mm x 280mm x 226mm)
Weight:	16lbs (7.3kg)	9.7lbs (4.4kg)

### WOOFER

Magnet:	20 oz (100 x 45 x 15mm)	10 oz (80 x 30 x 15mm)
Voice Coil:	1.0" (25mm) Polyimide Film	.75" (19mm) Polyimide Film
Cone:	8" (205mm) Polypropylene	6.5" (165mm) Polypropylene
Surround:	Butyl Rubber	Butyl Rubber
Dust Cover:	Polypropylene	Polypropylene

### TWEETER

Magnet:	Neodymium	Neodymium
Dome:	PEI (Polyetherimide) 1" (25mm)	PEI (Polyetherimide) 1" (25mm)
Type:	Fixed Position	Fixed Position

# The Rock

Each home has its own distinct accent,  
and there's an AccentPLUS<sup>®</sup> speaker  
to match any area, space, or décor.

Find your unique Accent with NuVo.



[www.nuvotechnologies.com](http://www.nuvotechnologies.com)

2395 Arbor Tech Drive, Hebron, KY 41048

Phone: 859-817-7200 Toll Free: 866-796-4904