



OMNISTAT/2



HAI OmniTouch
portable



HAI SNAP LINK
Mobile

HAI Catalog: Table of Contents

Product Categories.....	2
Letter from the President	3
Throughout the Years.....	4-5
Industry Participation & Research.....	6
Reliability & Approvals.....	7
Benefits of Whole Home Automation.....	8-10
Designing a Home Automation System....	11-13
How to Buy HAI Products.....	14



Home Control Systems

15

HAI Controllers: The heart of your home.....	15
Omni Controllers.....	16-17
Omni Family Specifications	18
OmniPro II Controllers & Promo Kits	19
Omni IIe Controllers & Promo Kits	20
Omni LT Controllers & Promo Kits.....	21-22
Lumina Controllers	23-24
Lumina Family Specifications	25
Lumina Products	26
International Controllers	27
OmniPro II Spanish.....	28



Lighting Control

29-30

HAI Lighting Control Products.....	31-34
------------------------------------	-------



Energy Management

35-36

Omnistat2 Products.....	37-40
Omnistat/Omnistat-Z Products	41-42
Energy Management Accessories.....	43



Whole Home Audio

44-46

Hi-Fi by HAI Products	47-49
-----------------------------	-------



Surveillance

50

Digital Video Recorder.....	51
Cameras/Accessories	52



Interface Options

53

Touchscreens	54-58
OmniTouch 5.7 Accessories	59
Consoles & Interface Accessories	60
Interface Options – HAI Software	61
HAI Software	62-67



Accessories

68

Omni & Lumina Accessories.....	69-72
HAI Wireless Products	73-74
Cables.....	75
Demo Adapter Kits & Demo Cases	76

Connectivity Partners.....	77
----------------------------	----

Training, Programs & Documentation

HAI Dealer Program.....	78
Dealer & Distributor Support.....	79-80
HAI Training	81-82
Architect/Builder Support.....	83
Technical Support & Service	84

Wiring Requirements.....	85-86
Wiring Diagrams	87-92
Index by Part Number	93-95
Index by Product Type.....	96-99

Product Categories



HOME CONTROL SYSTEMS

PAGES 15 TO 28



LIGHTING CONTROL

PAGES 29 TO 34



ENERGY MANAGEMENT

PAGES 35 TO 43



OMNISTAT-Z
OMNISTAT



WHOLE HOME AUDIO

PAGES 44 TO 49



SURVEILLANCE

PAGES 50 TO 52



INTERFACE OPTIONS

PAGES 53 TO 67

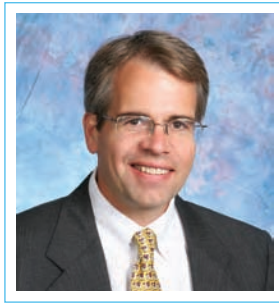


ACCESSORIES

PAGES 68 TO 76



Letter From the President



Dear Customers:

Thanks to you, HAI has had another record setting year! Increasing consumer demand, new products and the ability of our systems to save energy and the environment will assure a great 2008 for you and HAI.

We did a lot of listening this year to the comments you shared with us at dealer meetings, online, and through our sales and technical support teams. You'll see the results in our new products and services. Our new eight and ten inch OmniTouch Touchscreens allow you to add web-based services like music, concierge, calendar and cameras to your HAI system. A new Network Digital Video Recorder allows you to view up to four cameras at home and away, and can record based on motion and events while you're gone. We've added support for popular music systems, more serial ports, and flash updating capability to our OmniPro II and Lumina Pro home control systems. The new OmniStat2 thermostat family has advanced energy management features. And wait 'till you try Snap-Link Mobile on your Smartphone – you will wonder how you ever lived without it!

HAI is here to support you. In addition to growing our engineering and technical support staff, we have installed a call center system so we can answer your questions quickly and efficiently. PC Access is significantly enhanced with easier set-up and programming. We are constantly improving our sales literature, and offer convenient training and webinars to help you grow your business.

Be sure that you're signed up for HAI's e-mail alerts and visit our web site for the latest information. Thanks again for your business, and we look forward to seeing you at trade shows and events in 2008!

Sincerely,

Jay McLellan, President & CEO

“

HAI products are used in almost 100% of our home automation projects. Reliability, ease of use for the consumer, and the right mix of technology help us use HAI in anything from entry level to our most complex integration jobs. ”

Tom Kucsan, President
Advanced Residential Systems
Allentown, PA





Throughout The Years



Tom Pickral, Brian Yokum, and Jay McLellan in front of HAI's Headquarters in New Orleans, LA.

HAI (Home Automation, Inc.) was formed in 1985 to provide automation products to the newly emerging automation and controls market. HAI's founders, Tom Pickral, Brian Yokum, and Jay McLellan, worked together in the commercial automation industry and sought to apply this expertise to the home automation market.

The company's first product, the Model 1503, was introduced in 1988 as the first system on the market to offer complete burglary and fire protection, telephone access, lighting and appliance control plus programmable automation in a single affordable product.



Since its inception in 1985, HAI has been raising the standard in home automation technology as the industry leader and innovator.

1985

HAI formed to provide automation products to the newly emerging automation & controls market.

1995

HAI introduces its **Omni** system—providing twice the performance at half the cost of the Model 1503. The Omni was an instant success for HAI and its customers.

1997

The **OmniPro** is introduced, providing expanded features for large homes.

2001

HAI introduces **Web-Link II**—the first Internet remote access and control software for residential use.

1988

The **Model 1503** is introduced as the first integrated security and automation system on the market.

1996

Omnistat is introduced — the first EPA ENERGY STAR® programmable communicating thermostat line.

2000

HAI introduces the **Omni LT** home control system for smaller homes, townhouses, apartments and European markets.

HAI—a proven track record of reliable, affordable, award-winning products since 1985.



2003

HAI introduces the **OmniTouch Touchscreen**. It quickly became the international face of home automation.

2005

HAI introduces **OmniTouch with Video**, allowing surveillance video to be displayed.

HAI Lighting Control (HLC)

introduces the concept of affordable, elegant lighting control.

HAI Wireless products enhance security and automation applications.

2007

Snap-Link version with OmniTouch screen—allows it to be used on an Ultra Mobile PC as a Wireless Touchscreen.

OmniTouch 5.7 Touchscreen released.

Omnistat-Z thermostat allows wireless communication to HAI controllers.

2002

OmniPro II replaces the OmniPro.

Video Recording capabilities are added to **Web-Link II**.

2004

HAI introduces **Home Control for Windows® Media Center**—allows control of an HAI system on your TV.

2006

HAI introduces **Hi-Fi by HAI**, a revolutionary Whole Home Audio system.

HAI introduces **Snap-Link**—a USB key that plugs into any computer to monitor and control lights, security, temperatures, and webcams over the Internet.

HAI introduces **Lumina**.



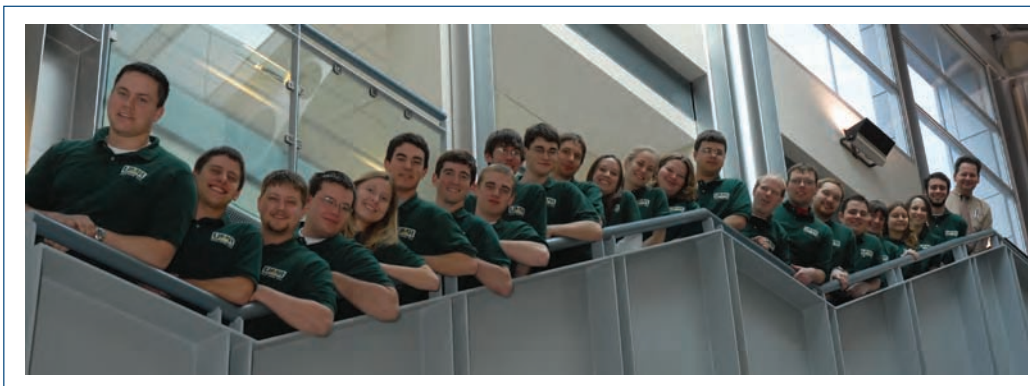
Industry Participation & Research

As a market leader in the home automation industry, HAI actively engages in research for the advancement of HAI products and the industry as a whole.

Energy conservation, alternative energy and better building techniques are ongoing endeavors being pursued by HAI's Engineering and Product Development divisions, in conjunction with several private and government agencies.

HAI and its partners have ongoing research projects in four areas: Enhanced Logic Thermostats, "Health" Monitoring for Heating, Ventilation and Air Conditioning (HVAC) systems, Zero Energy Homes, and Home Energy Monitoring. Additionally, HAI participates in the Department of Energy's Building America programs to develop energy solutions for new and existing homes.

HAI is proud to be active members of the following leading industry organizations:



HAI teamed up with the Solar House Team from the University of Missouri-Rolla (pictured above) for the 2007 Solar Decathlon. Sponsored by the Department of Energy, the goal of the bi-annual Solar Decathlon is to build a house that can successfully function year round using only solar power for energy.

HAI's Reliable Home Control Systems Are the Most Popular in the World.



HAI systems have been installed worldwide for over twenty years. Many of HAI's first generation controllers are still in use; some of them have been installed and running continuously since 1988!

HAI uses embedded controller technology in its home control systems, a technology proven to be reliable with decades of use. HAI controllers have no fans, disk drives, or other moving parts to fail. Some of our competitors use personal computers, which have a useful life of 3-5 years. Wouldn't you like a system that will last longer than a few years?

All HAI products can work in a stand-alone fashion so they are not dependent on any other products in the house, including computers. There is no single part that can cause an entire system to fail. For example, light switches still control the lights and thermostats still control your heating and cooling system. These familiar devices are easy-to-use for homeowners and guests in every day living.

HAI makes sure that all products are tested to the highest industry standards to ensure reliability and safety. To ensure the highest quality, HAI has products tested by Underwriters Laboratories (UL), the most stringent test lab in North America. Many competitors refuse or are unable to meet these strict requirements.

In addition to meeting UL requirements, HAI also meets CE (European Standard) requirements. In most cases the requirements and testing for CE are more difficult, but HAI goes the extra distance to ensure the highest quality product is available.

Approvals

UL Residential Fire and Burglary (Omni family)

UL Commercial Burglary (OmniPro II & Omni IIe)

UL Energy Management (Lumina family & Omnistats)

FCC Part 15J, Part 68 (Omni & Lumina families)

California Title 24 Compliant (Omni & Lumina families)

California State Fire Marshall (Omni family)

CP-01 Compliant (Omni family)

CE (European Standard - Hi-Fi; Omni & Lumina families)

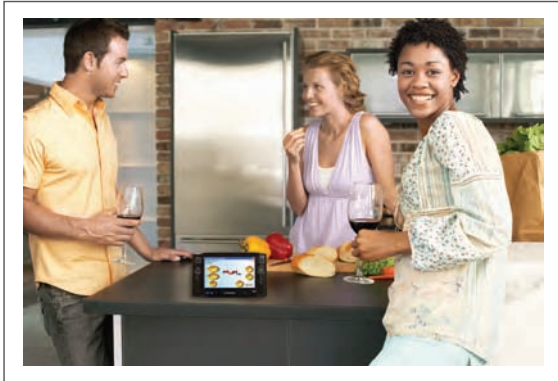
IS-60 (Canadian Standard - Omni & Lumina families)

HAI is an ENERGY STAR® Partner and all Omnistats meet the Environmental Protection Agency's ENERGY STAR® guidelines for energy efficiency.





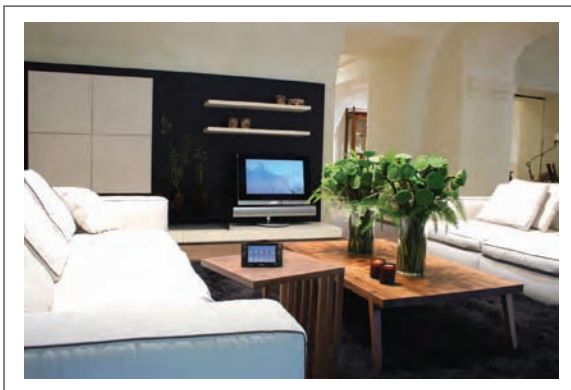
Benefits of Whole Home Automation



An automated home adjusts the security, temperatures, lighting, and audio automatically for comfort, energy savings, and convenience.

An Omni family system can take the place of a standard security system, because it's already built-in. A Lumina family system does not include security; but, if desired, can tie into many security systems. For an affordable price, an HAI home control system greatly increases the value, safety, and efficiency of your home.

HAI makes reliable home automation systems. Our multi-award winning product line includes home control systems, lighting control products, a full line of thermostats, whole home audio, surveillance products, Touchscreens, Internet access and control software and an expanding line of accessories.



Between our Omni and Lumina families of home control systems, HAI provides options to meet virtually all size, sophistication and pricing requirements.

Benefits of Whole Home Automation



Security

- All lights turn on in event of alarm or fire.
- View and record surveillance video of the nursery, pool, or front door.



Lighting Control

- Enhance your home with elegant lighting control.
- Never walk into a dark home again.
- Coordinate lighting and set by schedule, time of day, or event, such as vacation.



Energy Management

- Thermostats automatically set back and unused lights turn off when leaving the home.
- Settings restore automatically when returning home, saving energy.



Whole Home Audio

- Share your tunes! Music from the den can follow you down the hall and into the kitchen.
- Use the telephone to announce messages throughout the house over the audio speakers.



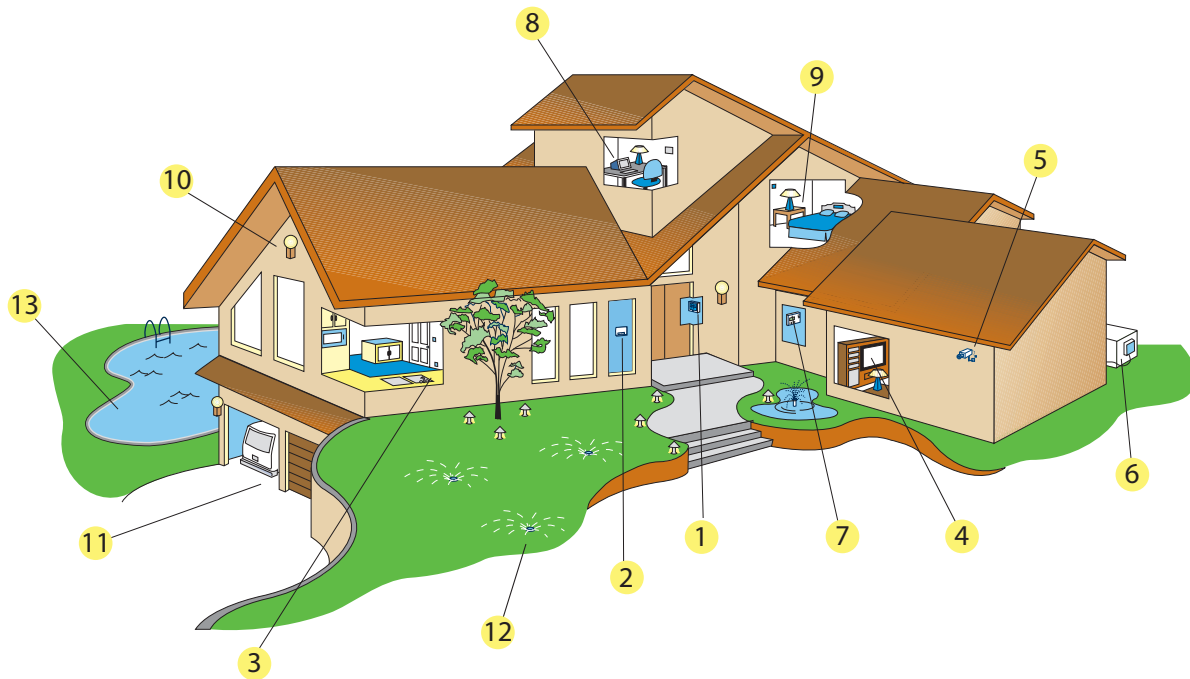
Interface Options

- Control your entire home from a large, colorful Touchscreen or a TV.
- Securely access and control your home from anywhere in the world via the Internet or telephone.





Benefits of Whole Home Automation



1 OmniTouch Touchscreen

Enjoy one-touch control of security (Omni family systems only), temperature, lighting, audio, and other home control functions like draperies or irrigation via easy-to-recognize icons.

2 Security

Professional quality UL Listed security is built-in to Omni family controllers. If desired, Lumina family controllers can integrate with an existing security system.

3 Lighting

Set warm and comfortable moods for dining, movies or entertaining. Control the scenes with a remote. Provide architectural quality lighting control and passive security for "lived-in" look when on vacation.

4 Whole Home Audio

Share music throughout the house.

5 Surveillance Cameras

View and/or record guests arriving at the front door, or check on kids in the pool from any Touchscreen or the Internet.

6 Energy Management

Be comfortable at home, save energy when you're away. Control temperatures in wine cellars, humidors, greenhouses, aquariums, etc.

7 Omnistat Thermostat

Communicating programmable thermostat for heating & cooling control. Easily monitor energy usage.

8 Internet Access & Control

HAI Snap-Link and Web-Link II allow you to control and see status of your home from anywhere via the Internet.

9 Telephones

Check and adjust security, temperatures, and lights via any phone at home or away. Receive a call to advise on temperature, security and more.

10 Motion Detection

Detect intrusion; automatically turn on lights and activate automation functions when entering a room.

11 Vehicle Detection

Announce visitors, turn on lights, and switch on TV to view driveway, etc.

12 Irrigation

Control irrigation solenoid valves for lawn sprinklers, plus inputs for rain sensing.

13 Pool & Spa

Control filters, timers, heating, temperatures, solar control and more.



Step 1: Choose Your Home Controller

Do you want security included in your home control system?

- If you are looking for a built-in UL Listed burglar and fire system, choose an HAI Omni family home control system. The Omni family of home control systems includes the OmniPro II, the Omni IIe, and the Omni LT.
- If you already have a security system, or if security is not necessary, choose an HAI Lumina family home control system. The Lumina family can integrate with many security systems and includes all of the other great features that HAI home control systems support. The Lumina line includes the Lumina Pro and the Lumina.

Once you have determined which family of home controllers to use, decide which member of the Omni or Lumina family works best for you. The size of your home and the desired automation options will determine which product you need within either our Omni family or Lumina family of home control systems. See pages 18 and 25 to compare these systems.

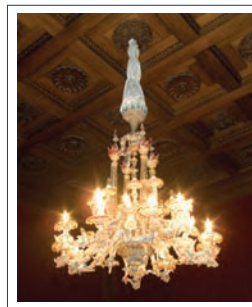


Step 2: Elegant Lighting Control

If you would like to include elegant lighting control, we recommend using our HAI Lighting Control (HLC) family of products. The HLC line includes dimmers, switches, remote controls, and plug-in modules.

All HLC products are UL Listed and use Universal Powerline Bus (UPB™), a digital communications

standard for lighting and home control, that ensures superior reliability. There is no need to run new wires as long as you have standard residential wiring (120/240V electrical system with a neutral wire at each switch location).



Our Omni and Lumina families of home control systems have built-in support for UPB™ so there is no need to add on any modules for lighting. To design a lighting control system, simply choose a dimmer or switch from our HLC product line for each load in your home. For example: choose a 600W UPB™ Dimmer Switch for a load that is less than 600 Watts. For lamps, use the Plug-in Lamp Module.



Step 3: Energy Management

Your HAI home control system can turn off lights, water heaters and pumps when they are not needed. When used with a participating utility company, energy can be monitored and tracked for additional savings.

The Omnistat family of communicating programmable thermostats allows homeowners to adjust temperatures based on scheduling and occupancy, maximizing energy savings and comfort. Omnistat thermostats are fully interactive with all HAI home control systems and may be controlled both locally and remotely.

HAI sells temperature and humidity sensors that may be used for temperature-based programming of ceiling fans, greenhouses, and more.



Designing a Home Automation System



Step 4: Whole Home Audio

If you are interested in Whole Home Audio, HAI offers Hi-Fi by HAI, which connects to any of our Omni family or Lumina family controllers.



Hi-Fi by HAI is a high fidelity, central Whole Home Audio system, featuring Class D digital amplifiers. The main unit is mounted on a closet wall or structured wiring enclosure for a neat, professional installation.

Hi-Fi by HAI is the first built-in unit with Remote Input Modules (RIMs), so music can be located anywhere in your home instead of in an audio rack. RIMs can be located throughout the house to pick up music from your home theater, kitchen TV, computer, personal music player, satellite radio, Media Center, CD player, or any other source with an audio output.

Placing Volume-Source Control (VSC) units in each room with speakers allows for control of volume, source, bass and treble with a simple turn of the knob. It also has a routed IR repeater to allow remote control of source equipment.



Step 5: Surveillance

Surveillance cameras may be added to either the Lumina or Omni family systems. Activate video recording when an alarm trips, and send an alert to a cell phone or e-mail address stating that an alarm has been tripped. View and/or record the

nursery, pool area, or front door. Automatically display live video feed on a Touchscreen or TV when the doorbell rings. View live feed or recorded video remotely over the Internet.



Step 6: Interface Options

HAI's home control systems can be managed via telephones, Touchscreens, televisions, remote control, consoles, and keypads, including an access control keypad. HAI's OmniTouch Touchscreens are simple-to-use Touchscreens that look elegant on a wall or table. These Touchscreens allow you to view the output from cameras on your Touchscreen and control all the functions of an HAI system. HAI offers both in-wall and wireless Touchscreen options.



If you would like to control your home remotely, HAI provides several different options. The first option is calling your system via the telephone while either inside the home or outside the home and responding to voice prompts. This telephone access is standard in Omni family controllers and is an option for Lumina family controllers.

Designing a Home Automation System



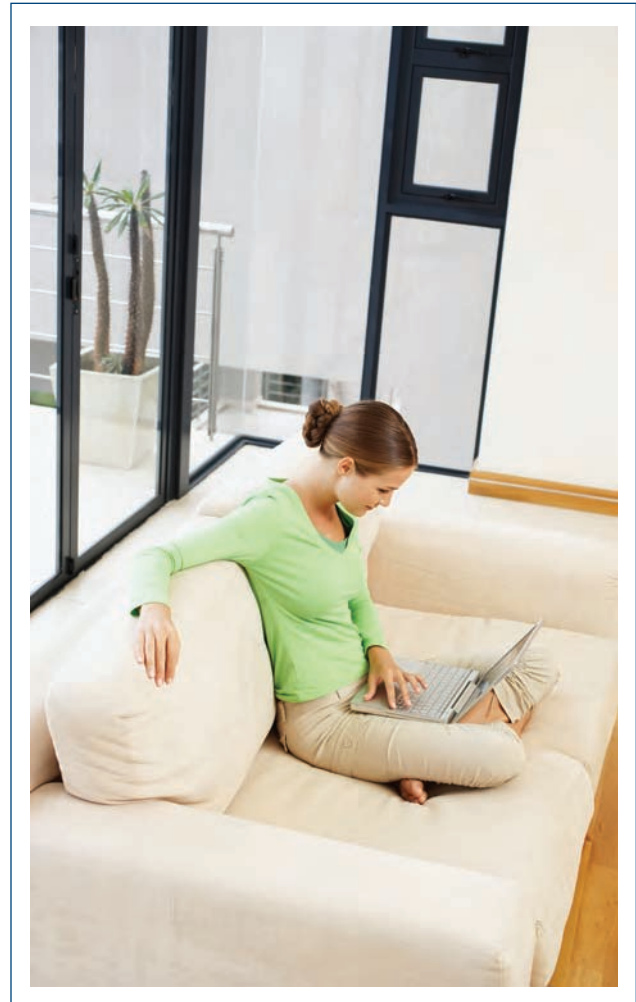
If you select an HAI home control system with a built-in Ethernet port, you may use our Snap-Link program to remotely access your home over the Internet. Snap-Link offers you the ability to securely access and control your home while leaving no trace behind by plugging a simple USB key drive into any PC in the world. Plug Snap-Link into an Ultra Mobile PC for an affordable Wireless Touchscreen option. Snap-Link Mobile allows you to have the same functionality as Snap-Link on your Smartphone or PDA. HAI's Web-Link II software can also be used for remote access with any HAI home controller.

HAI's Home Control for Windows® Media Center allows you to sit in front of your television and use the Media Center's remote to change your home's settings, view surveillance cameras, etc.



Step 7: Accessories and Expansion

HAI has a full line of Wireless Products and offers accessories for all of our main product categories, including expansion accessories for the Lumina, Omni, Omnistat and Hi-Fi by HAI product lines.



With the help of HAI's Connectivity Partners, (<http://www.homeauto.com/partners>), you can expand your HAI home control system with other solutions including audio/video, central vacuum, handheld remote, irrigation, lighting, remote access, security, software, structured wiring, Touchscreens, whole home audio, and window coverings. See page 77 for a listing of HAI Connectivity Partners.



How to Buy HAI Products

HAI's products are designed and intended for professional sale, installation, and service.

HOMEOWNERS AND BUILDERS:

- Contact an HAI Dealer to get a quote for installation of an HAI system.
- Use HAI's website to search for HAI Listed Dealers.
- HAI recognizes its most outstanding Dealers by annually selecting Five Star Dealers and designating them with a distinct logo.

DEALERS/INSTALLERS:

- Contact an HAI Distribution partner that stocks HAI products and appropriate accessory products.
- Use HAI's website to search for HAI Distributors by state or by country.



For more information regarding how to buy HAI products, please visit
<http://www.homeauto.com/HowtoBuy>

HAI controllers are the heart of your automated home. They coordinate all of the systems in your home so that they communicate with each other, making your home more comfortable, secure, and convenient.

Omni Controllers

Omni controllers feature built-in UL Listed security and fire systems, lighting control, temperature control, and audio control. Three models ensure the right size for any home and budget. Pages 16 to 22.



Lumina Controllers



Lumina is a sophisticated lighting and home control system that is affordable and easy to install in new or existing homes. There are two models in the Lumina family. Pages 23 to 26.

International Controllers

HAI offers the Omni family of home control systems in a variety of other languages. They have the same features as the corresponding English Omni line. Pages 27 to 28.



Omni Controllers



Omni Family of Home Control Systems



Description

Omni home control systems feature built-in UL Listed security and fire systems, lighting, temperature, and audio control.

The Omni family of home control systems consists of the OmniPro II, the Omni IIe, and the Omni LT to meet virtually all size, sophistication, and pricing requirements. Each model offers the best price to performance ratio in its class.



Security



Omni controllers are UL Listed, CP-01 compliant security and fire systems. They detect intrusion, smoke and fire, carbon monoxide, water, and other hazards with wired or wireless sensors.

Security zones are fully configurable and expandable. You may set the validity of user codes by time and authority. For example, the security code for the nanny, housekeeper, or contractor only works during specified times. The Omni family supervises zones, battery, and bell circuits. Additionally, they have a built-in digital communicator for use with a central station and can dial up to 8 additional phone numbers chosen by the owner for voice notification.



Lighting

An Omni system can control your home lighting by schedule, motion detection, door openings,



sunrise, sunset, alarm activation and more. It provides the benefits of a sophisticated lighting control system by setting scenes, fades, and dimming levels.

Omni family controllers have an astronomical clock and automatically adjust for daylight savings time in order to always provide accurate dusk to dawn lighting control.

Omni supports HAI Lighting Control (HLC) products, which include dimmers, switches, remote controls, and plug-in modules. It can operate lighting devices by other manufacturers, including Z-Wave™ based devices, Zigbee®, ALC hardwire, RF, hardwired, and others provided by HAI Connectivity Partners.



Energy Management

If you add HAI's Omnistat communicating thermostats, you may control your home's temperatures through your Omni system by schedule and activity—such as home, asleep, away, room occupancy, outdoor temperature, etc.



HAI temperature and humidity sensors allow for temperature-based programming of events in your Omni controller. They may be used to activate programs for controlling temperatures in attics, garages, greenhouses, basements, wine cellars, or coolers.





Whole Home Audio



Omni systems may be connected to a Hi-Fi by HAI whole home audio system.

Omni systems can control on/off, volume, muting, audio source, and many other functions for each audio zone.

Use the telephone to make an announcement through Hi-Fi by HAI, such as calling the kids downstairs for dinner.

The OmniPro II also controls audio systems by many other manufacturers, including NuVo, Proficient, Russound, SpeakerCraft, and Xantech.



Surveillance

Surveillance cameras may be added to Omni family systems. View and/or record the nursery, pool area, or front door. Automatically display live video feed on the Touchscreen or television when the doorbell rings.

View live feed or recorded video remotely over the Internet or from your Smartphone/PDA. Activate video recording when an alarm trips, and send an alert to a cell phone or e-mail address stating that an alarm has been tripped.



Interface Options

Your Omni system has built-in telephone access with voice menu that you may access when you are inside or outside your home. The telephone access also



allows your home to contact you in case of alarm or alert. It also has a built-in modem that allows remote programming and status review, which is available over

the Internet using the Ethernet port. You may add additional interface options, such as an OmniTouch Touchscreen, to your Omni system.

Choose from one of HAI's award-winning software options, such as Internet access and control with Snap-Link, Web-Link II, or Home Control for Windows® Media Center.

With Snap-Link or Web-Link II, you can securely control your home from any Internet enabled computer. Home Control for Windows® Media Center allows you to change settings to your home while sitting on a sofa watching TV.



Accessories

HAI offers a full line of accessories for Home & Lighting Control, Energy Management, Whole Home Audio, and Interface Options. Accessories may be added at the time of initial installation or later as needs change.



HAI has a line of wireless supervised security products that replace wired door and window sensors, as well as wired motion and glassbreak detectors. HAI also makes a four-button keyfob to control automation functions.



Omni Family Specifications

HAI Models	Omni LT	Omni Ile	OmniPro II
HAI Lighting/Rooms	2	8	31
Lighting Scenes	16	64	128
Lighting Addressess	16	64	250
Zones	8	16	16
Zone Expansion Total	24	48	176
2 Wire Smoke Loops	1	4	4
4 Wire Smoke Loops	24	48	176
Thermostats	2	4	64
Consoles (keypads)*	4	8	16
OmniTouch 5.7 Touchscreens	3**	7***	15****
12 Volt Triggers (w/ expansions)	2 (10)	8 (8)	8 (136)
Serial Ports	1	5	5
Serial Expansion Total	2	6	6
Ethernet Port	No	Yes	Yes
Audio Control	Yes	Yes	Yes
Flash Memory	No	Yes	Yes
User Codes	8	16	99
Programming Lines	100	500	1500
Vocabulary	195	550	550
Custom Vocabulary	No	No	Yes
Depluggable Terminal Strips	No	Yes	Yes
Format	Contact ID, 4/2,3/1	Contact ID, 4/2,3/1	Contact ID, 4/2,3/1
Transformer Required	16.5V (40VA)	24V (40VA)	24V (40VA)
Battery (Typical)	12V (7 Ah)	12V (7 Ah)	12V (7 Ah)
Aux Current Max	500 mA	1A	1A
Bell Current Max	1A	1A	1A
Aux Current (UL 24hr.)	200 mA	250 mA	250 mA
Bell Current (UL 24hr.)	350 mA	300 mA	300 mA
Num. of Expansion Boards (10A06-1) Supported	0	2	2
Num. of Expansion Enclosures (17A00-X) Supported	0	0	8
Num. of Expansion Boards (22A00-1) Supported	1	0	0
Num. of 64 Zone Wireless Receivers (45A00-1 or 42A00-1) Supported****	1	1	2
Warranty	2 years	2 years	3 years

- * Systems must have 1 console. Each OmniTouch 5.7 Touchscreen uses 1 console address.
 ** Recommend 32A30 Touchscreen Hub for 2 or more OmniTouch 5.7 Touchscreens.
 *** Recommend 32A30 Touchscreen Hub for 3 or more OmniTouch 5.7 Touchscreens.
 **** Wireless Receivers can support 64 transmitters and can report to 16, 32, 48, or 64 zones depending upon your setup. Each group of 16 zones counts as one Expansion Enclosure.

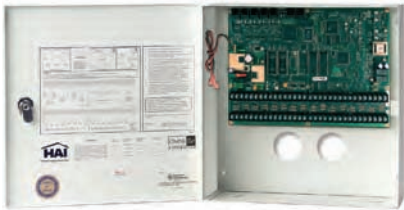
See page 87-88
for Omni Wiring
Diagrams



The OmniPro II is HAI's flagship home control and security system. It is designed for larger homes and commercial installations.

ENHANCED!

Now includes flash memory for easy firmware updates and five serial ports.



OmniPro II Controller 20A00-2

OmniPro II controller with enclosure, lock set with two keys, UPB™ Powerline Interface Module and cable, RJ31X cord and jack, manuals.

OmniPro II Commercial Controller 20A00-5

OmniPro II controller with commercial attack-proof enclosure, lock set with two keys, UPB™ Powerline Interface Module and cable, RJ31X cord and jack, manuals.



OmniPro II Controller for Structured Wiring Enclosures 20A00-8

OmniPro II controller on mounting plate for Leviton, OnQ/Legrand, UStec, and "open house" type enclosures, UPB™ Powerline Interface Module and cable, RJ31X cord and jack, manuals, accessory kit, wiring diagram for enclosure door.

OmniPro II Board Only 20A00-21

OmniPro II controller board only.

Promo Kits

All OmniPro II Promo Kits come with surface mount console, flush mount kit, RC-80B Omnistat thermostat, indoor/outdoor temperature sensor, UPB™ Powerline Interface Module and cable, RJ31X cord and jack, serial cable, and manuals in addition to the items listed in their descriptions.



OmniPro II Kit with Flush Console Promo 15

OmniPro II controller with enclosure, 10A06-1 expander, lock set with two keys.



OmniPro II for Structured Wiring Kit with Flush Console Promo 155

OmniPro II controller on a structured wiring backplate, 10A06-1 expander.

OmniPro II Starter Kit Promo 16

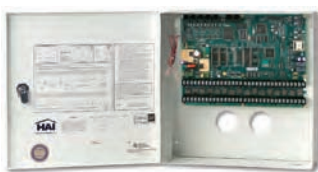
See page 82. Includes PC Access Dealer Software (1105W) to program the system.

Omni IIe Controllers & Promo Kits

An ideal choice for mid-size homes and small businesses, the Omni IIe is the middle member of HAI's best-selling Omni family.

ENHANCED!

Now includes flash memory for easy firmware updates and five serial ports.



Omni IIe Controller 20A00-50

Omni IIe controller with enclosure, lock set with two keys, UPB™ Powerline Interface Module and cable, RJ31X cord and jack, manuals.



Omni IIe Controller for Structured Wiring Enclosures 20A00-52

Omni IIe controller on mounting plate for Leviton, OnQ/Legrand, UStec, and "open house" type enclosures, UPB™ Powerline Interface Module and cable, RJ31X cord and jack, manuals, accessory kit, wiring diagram for enclosure door.

Omni IIe Board Only 20A00-53

Omni IIe controller board only.

Promo Kits

Promo Kits 12e and 12es come with surface mount console (33A00-1), flush mount kit, RC-80B Omnistat thermostat, indoor/outdoor temperature sensor, UPB™ Powerline Interface Module and cable, RJ31X cord and jack, serial cable, and manuals in addition to the items listed in their descriptions.



Omni IIe Kit with Flush Console Promo 12e

Omni IIe controller with enclosure, lock set with two keys.



Omni IIe for Structured Wiring Kit with Flush Console Promo 12eS

Omni IIe controller on a structured wiring backplate.



Omni IIe Kit in Enclosure with Snap-Link Promo 13e

Includes an Omni IIe controller in enclosure, lock set with 2 keys, RJ31X cord and jack, manuals and accessories, Snap-Link (1120), Surface Mount Console with connector kit (33A00-1), Serial PC Cable (21A05-2).

Omni IIe Kit for Structured Wiring with Snap-Link Promo 13eS

Includes an Omni IIe on a mounting plate, RJ31X cord and jack, manuals and accessories, Snap-Link (1120), Surface Mount Console with connector kit (33A00-1), Serial PC Cable (21A05-2).

Omni IIe Starter Kit Promo 14e

See page 82. Includes PC Access Dealer Software (1105W) to program the system.

An economical choice for homes, townhouses, condos, apartments and small businesses. The Omni LT is the entry level member of HAI's best-selling Omni family.



“When Circuits Plus was first formed back in 1994, we began working with HAI. Over the years, the continued support, training, and friendly approach from the employees of HAI have kept us promoting the HAI product. With the great respect the industry has given to HAI, we have decided to only offer HAI products to our clients for security and automation projects. I have compared with your competitors and believe that HAI is far superior to any of them!”

David R. Thornton, President
Circuits Plus LLC
Duluth, MN



Omni LT Controller

21A00-1

Omni LT controller with enclosure, RJ31X jack and cable, manuals, accessory kit.



Omni LT for Structured Wiring Enclosures

21A00-11

Omni LT controller on mounting plate, UPB™ Powerline Interface Module and cable, RJ31X jack and cable, manuals, accessory kit, and wiring label for enclosure door. Fits in Leviton, UStec and “open house” type enclosures.



Omni LT Board Only

21A00-2

Omni LT controller board only.

All Omni LT Promo Kits come with surface mount console (33A00-1), RJ31X jack & cable, manuals, and accessory kit in addition to the items listed in their descriptions.



Omni LT Kit with Surface Console **Promo 9**
Case of 6 **Promo 9CS**
Omni LT controller in enclosure.



Omni LT Kit **Promo 10**
Omni LT controller in enclosure, UPB™ Powerline Interface Module and cable, RC-80B Omnistat thermostat, indoor/outdoor temperature sensor, serial cable.



Omni LT Kit for Structured Wiring Enclosures **Promo 9S**
Case of 6 **Promo 9SCS**
Omni LT controller on mounting plate for Leviton, UStec, and "open house" enclosures.



Omni LT Kit for Structured Wiring Enclosures **Promo 10S**
Omni LT controller on mounting plate, UPB™ Powerline Interface Module and cable, RC-80B Omnistat thermostat, indoor/outdoor temperature sensor, serial cable.

Omni LT Starter Kit **Promo 11**
See page 82. Includes PC Access Dealer Software (1105W) to program the system.



Lumina Family of Home Control Systems



Description

A Lumina home control system provides sophisticated lighting control that is affordable, easy to install, easy to operate, and offers unrivaled expandability.

Your Lumina system includes everything that you need to get started with whole house lighting control except for the appropriate HAI Lighting Control (HLC) light switches. Just determine which HLC light switches you need to replace your current switches.

At the heart of Lumina family home control systems are six standard modes: Home, Sleep, Away, Vacation, Party and Special.

The Lumina family of home control systems consists of the Lumina Pro and the Lumina. The number of rooms and lights that you wish to control will usually determine which Lumina home control system you need to buy.



Lighting



A Lumina family system can control your home lighting by schedule, motion detection, door openings, sunrise, sunset, alarm activation and more. It provides the benefits of a sophisticated lighting control system by setting scenes, fades, and dimming levels.

The Lumina family has an astronomical clock and automatically adjusts for daylight savings time in order to always provide accurate dusk to dawn lighting control.

Lumina controllers support HAI Lighting Control (HLC) products, which include dimmers, switches, remote controls, and plug-in modules. They can operate lighting devices by other manufacturers, including Z-Wave™ based devices, Zigbee®, ALC hardwire, RF, hardwired, and others provided by HAI Connectivity Partners.



Energy Management



If you add HAI's Omnistat communicating thermostats, you may control your home's temperatures through your Lumina system by schedule and activity such as home, asleep, away, room occupancy, outdoor temperature, etc.

Using HAI temperature and humidity sensors allow for temperature-based programming of events in your Lumina family system. They may be used to activate programs for controlling temperatures in attics, garages, greenhouses, basements, wine cellars, or coolers.



Whole Home Audio



The Lumina family systems may be connected to a Hi-Fi by HAI whole home audio system.

Lumina systems can control on/off, volume, muting, audio source, and many other functions for each audio zone.





Lumina Controllers

Use the telephone to make an announcement through Hi-Fi by HAI, such as calling the kids downstairs for dinner.

The Lumina Pro also controls audio systems by many other manufacturers, including NuVo, Proficient, Russound, SpeakerCraft, and Xantech.



Security

If desired, a Lumina family controller can be integrated with a security panel to allow for security activated and emergency lighting, and temperature control. See HAI Connectivity Partners, <http://www.homeauto.com/partners> for exact models.



Surveillance

Surveillance cameras may be added to Lumina family systems. View and/or record the nursery, pool area, or front door. Automatically display live video feed on a Touchscreen or television when the doorbell rings.

View live feed or recorded video remotely over the Internet or from your Smartphone/PDA. Activate video recording when an alarm trips, and send an alert to a cell phone or e-mail address stating that an alarm has been tripped.



Interface Options



The Lumina Mode Switch allows you to change the mode of your Lumina home control system with the touch of one button. Changing modes adjust lighting, temperatures, audio and more just the way you like them.

You may add additional interface options, such as an OmniTouch Touchscreen, to your Lumina system. It also has a built-in modem that allows remote programming and status review, which is available over the Internet using the Ethernet port. Your Lumina system has optional telephone access with voice menu that you may access when you are inside or outside your home. The telephone access also allows your home to contact you in case of event change.



Choose from one of HAI's award-winning software options, such as Internet access and control with Snap-Link, Web-Link II, or Home Control for Windows® Media Center.

With Snap-Link or Web-Link II, you can securely control your home from any Internet enabled computer. Home Control for Windows® Media Center allows you to change your home settings while sitting on a sofa watching TV.



Accessories

HAI offers a full line of accessories for Home & Lighting Control, Energy Management, Whole Home Audio, and Interface Options. Accessories may be added at the time of initial installation or later as needs change.




HAI has a line of wireless sensors to monitor doors, windows, and motion. Sensors may be used for activation of automation features, such as occupancy-based lighting or other functions. HAI also makes a four-button keyfob to control the functions of the Lumina or Lumina Pro.



Lumina Family Specifications



 Models	Lumina	Lumina Pro
Rooms	8	31
Loads (lights)	64	250
House Status Switches	8	31
Max Keypads*	8	16
Max OmniTouch 5.7**	7	15
Thermostats	4	64
Audio Control	Yes	Yes
Flash Memory	Yes	Yes
Inputs (with expansion)	16 (48)	16 (176)
Outputs (with expansion)	10	10 (136)
Ethernet Port	Yes	Yes
Serial Ports (w/ expansion)***	5 (6)	5 (6)
Programming Lines	500	1500
Vocabulary	550	550
Customizable Vocabulary	No	Yes
Depluggable Terminal Strips	Yes	Yes
Num. of 16 Zone Hardwire Expanders (10A06-1) Supported	2	2
Num. of Expansion Enclosures (17A00-X) Supported	1	2
Warranty	2 years	3 Years

* Each OmniTouch 5.7 Touchscreen uses one keypad address.

** Recommend 32A30 Touchscreen Hub for 3 or more OmniTouch 5.7 Touchscreens.

*** One serial port used for UPB™ Powerline Interface Module.

**** Wireless Receivers can support 64 Transmitters and can report to 16, 32, 48, or 64 zones, depending upon your setup. Each group of 16 zones counts as one expansion enclosure.

See page 89 for
Lumina Wiring
Diagrams



HAI

ENHANCED!

Now includes flash memory for easy firmware updates and five serial ports.



Lumina Pro

44A00-2

Supports 31 rooms (256 lights). Includes Ethernet port, controller in enclosure with lock & keys, LCD keypad, UPB™ Powerline Interface Module & cable, phase coupler, serial cable, transformer & battery, manuals, and accessories.



Lumina

44A00-1

Supports 8 rooms (64 lights). Includes Ethernet port, controller in enclosure with lock & keys, LCD keypad, UPB™ Powerline Interface Module & cable, phase coupler, serial cable, transformer & battery, manuals, and accessories.



There are many interface options for the Lumina systems, including OmniTouch Touchscreens.

Energy Savings at the Push of a Button!

Place a Lumina Mode Switch by the main door or in the master bedroom to easily adjust lighting and energy consumption when leaving or going to bed.

Lumina Mode Switch

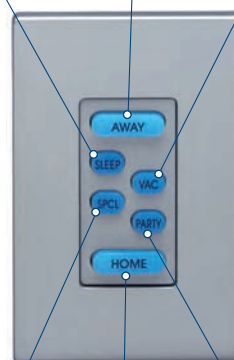
38A00-3

This 6 button keypad allows you to press one button, Sleep, Home, Vacation, Away, Party, or Special, to initiate a program for preset lights, temperature, and audio for the entire home. White bezel standard. Color Change Kit available on page 34. *(Grey bezel shown. Uses standard Decora-style Wallplate. Wallplate not included.)*

Away-lights and temperatures adjust for energy savings

Sleep-dimly lit pathway lights to bathroom or kitchen, all others off

Vacation-lights change periodically for lived in look



Lumina Mode Switch

Special-create a unique scene based on occasion

Party-landscape and indoor lighting set beautifully

Home-lights in main areas set to desired brightness

International Controllers



HAI is Worldwide, with Dealers and Distributors in Nearly 90 Countries!

For information on International Dealers and Distributors, please visit:
<http://www.homeauto.com/HowToBuy>

Omni family controllers are available in the following languages:

- **Castellano** ▪ **Chinese*** ▪ **Turkish*** ▪ **French**
- **Catalan** ▪ **Italian** ▪ **Spanish**

* Voice only. All others voice and text.



Foreign language versions of Snap-Link remote access software coming in 2008: **French, Spanish, Italian, Catalan, Castellano.**



HAI President and CEO, Jay McLellan (third from right), with an installation crew from Smarthome, an HAI International Distributor in Dubai. Mr. McLellan visited an installation site during the 2007 Hometech Middle East Expo, sponsored by the Consumer Electronics Association.

For foreign language controller information, please visit
<http://www.homeauto.com/Products/HAISystems/NonEnglishControllers.asp>



HAI

HAI's Award-Winning OmniPro II... *habla Español!*

ENHANCED!

Ahora incluye memoria de Flash para las actualizaciones fáciles del firmware y con cinco puertos seriales.

Now includes flash memory for easy firmware updates and five serial ports.



HAI orgullosamente presenta su OmniPro II en Español para que nuestros valiosos clientes que hablan español se sientan "Bienvenidos en su casa".



Este sistema presentará las mismas características avanzadas del original y premiado OmniPro II, pero ahora el usuario de lenguaje nativo en español se sentirá más confortable con el vocabulario en Español que le facilitará su manejo y comunicación. Voz, Menú, Pantalla Táctil OmniTouch (53A00-5), y PC Access (1105WSP) están todo con lenguaje en Español. La versión en Español del software con acceso remoto, Snap-Link, vendrá en 2008.

HAI is proud to make our Spanish speaking customers feel more at home with the OmniPro II in Spanish.

This system has the same functionality as the original award-winning OmniPro II, but makes the Spanish speaking end user more comfortable with a Spanish vocabulary and interface. Voice, menu, OmniTouch Touchscreen (53A00-5), and PC Access (1105WSP) are all in Spanish. Spanish language version of Snap-Link remote access software coming in 2008!

Voz, menú, pantalla táctil y acceso a computadora..... todo en Español !!!



OmniPro II Spanish

20A00-42

El controlador OmniPro II con caja, cerraduras con dos llaves, Modulo Interfase UPB™, cordón y caja RJ31X, manuales.

OmniPro II controller with enclosure, lock set with two keys, UPB™ Powerline Interface Module and cable, RJ31X cord and jack, manuals.

OmniPro II Spanish for

Structured Wiring Enclosures

20A00-44

Controlador OmniPro II en la placa de montaje para Leviton, OnQ/Legrand, UStec, y tipos de cajas "open house," Modulo Interfase UPB™ y cable, cordón y caja RJ31X, manuales, kit de accesorios, diagrama eléctrico para la puerta de la caja estructurada.

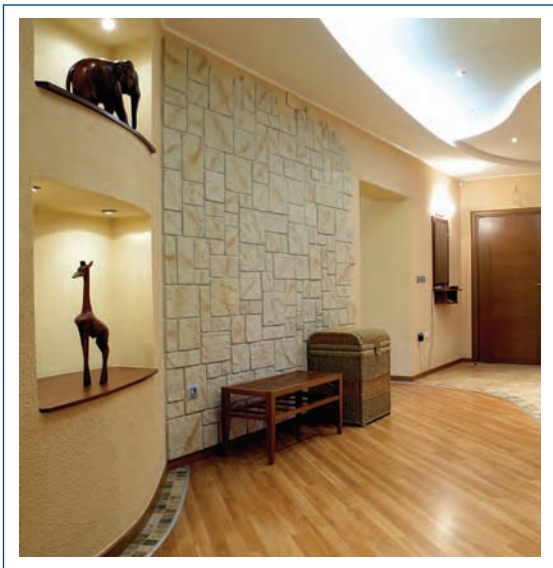
OmniPro II controller on mounting plate for Leviton, OnQ/Legrand, UStec, and "open house" type enclosures, UPB™ Powerline Interface Module and cable, RJ31X cord and jack, manuals, accessory kit, wiring diagram for enclosure door.



Elegant, Reliable Lighting Control at an Affordable Price!



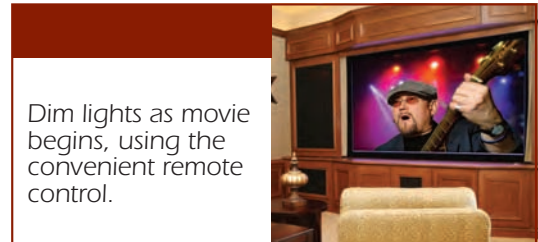
Lighting control can enhance the enjoyment and value of your home, add security for peace of mind, and contribute to savings on your energy bill.



With HAI Lighting Control (HLC) you can experience all of the benefits of a sophisticated lighting control system that is affordable and easy to install.

The HLC product line includes dimmers, switches, remote controls, and plug-in modules.

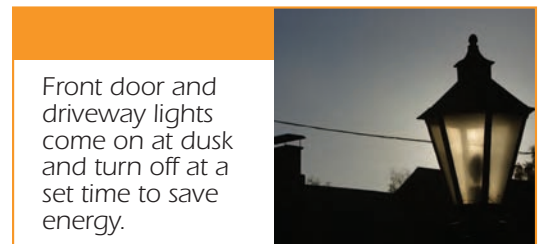
There is no need to run new wires as long as you have standard residential wiring (120/240V electrical system with a neutral wire at each switch location).



Dim lights as movie begins, using the convenient remote control.



Set the mood for entertaining with the push of a button.



Front door and driveway lights come on at dusk and turn off at a set time to save energy.



Light a pathway to safely exit your home during a fire.



Create a softly lit pathway to the bathroom or kitchen at night when a motion sensor is tripped.





HAI Lighting Control

Easy to Install

- No need to re-wire! Can be used in new or existing homes that have standard electrical wiring.
- HLC uses Generation II UPB™ (Universal Powerline Bus) a digital communications standard for lighting and home control that ensures superior reliability.

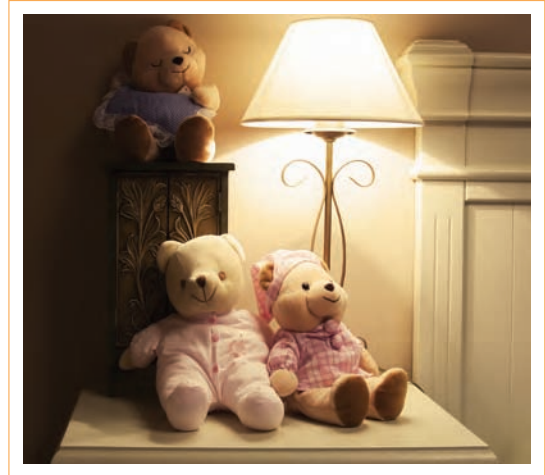
Easy to Use

- Switches feature true rocker action. Press and hold to brighten or dim. Press up to turn on. Press down to turn off.
- Homeowners may easily change scene settings at any time without a service call.

Matches Your Style



- Most switches accommodate standard Decora-style Wallplates, for unlimited faceplate options.
- HAI switches are offered in a multitude of colors, including Almond, Black, Brown, Grey, Ivory, Light Almond, and White.
- LED indicator lights at the top of the switches can be programmed to glow Blue, Red, Magenta, or turned off entirely.
- Scene Switch and House Status Switch may have custom laser engraved buttons.



Expand Your Benefits with an HAI Home Controller.

HAI Lighting Control (HLC) can be used with or without an HAI home control system. When HLC is used in conjunction with an HAI home control system, lights can be scheduled by sunrise/sunset, motion, or event. Additionally, lights can be controlled via remote control, telephone, Internet, Touchscreen, or TV.



Control your lights with an OmniTouch 5.7 Touchscreen.

See page 92 for HLC
Wiring Diagrams



With the exception of the 1500W and 2400W models, HLC switches accommodate standard Decora-style Wallplates.



**600W UPB™
Dimmer Switch** **35A00-1**
Case of 12 **35A00-1CS**

The 600 Watt UPB™ Dimmer Switch is used for controlling and dimming lighting loads up to 600 Watts. Includes a white paddle, connectors, instructions. Color Change Kit available on page 34.



**600W UPB™
Non-Dimming Switch** **35A00-3**
Case of 12 **35A00-3CS**

The 600 Watt UPB™ Non-Dimming Switch is used for controlling non-dimming loads, such as fluorescent lights, up to 600 Watts. Includes a white paddle, connectors, instructions. Color Change Kit available on page 34.

Generation II UPB™ Benefits

ENHANCED!



- Improved communication and enhanced noise immunity for superior reliability even in the noisiest of environments.
- Swifter reaction time of switches when tapped; virtually no delay between tapping of switch and light reaction.
- Full compatibility with UPB™ split phase repeaters.

High Wattage Dimmers



1000W UPB™ Dimmer Switch

Connectors, instructions. Requires its own gang box or must be de-rated. White paddle shown. Wallplate not included.

Order Switch in Desired Color

Almond	55A00-1AL
Black	55A00-1BL
Brown	55A00-1BR
Grey	55A00-1GR
Ivory	55A00-1IV
White	55A00-1WH



1500W UPB™ Dimmer Switch

Connectors, instructions. Requires a special back box. White paddle shown. Wallplate not included.

Order Switch in Desired Color

Ivory	55A00-2IV
White	55A00-2WH

Switch uses special sized Wallplate

1500W Wallplate, Ivory	55A02-2
1500W Wallplate, White	55A02-1



2400W UPB™ Dimmer Switch

Connectors, instructions. Requires a special back box. White paddle shown. Wallplate not included.

Order Switch in Desired Color

Ivory	55A00-3IV
White	55A00-3WH

Switch uses special sized Wallplate

2400W Wallplate, Ivory	55A03-2
2400W Wallplate, White	55A03-1





Table Top Scene Switch Cradle

38A15-BL Black
38A15-WH White

Table Top Scene Switch Cradle is used to table mount the Scene Switch, HAI product number 38A00-1, House Status Switch, HAI part number 38A00-2, or Lumina Mode Switch, HAI part number 38A00-3. Tabletop Cradle can be conveniently located throughout the home, including on a bedside nightstand, on the desk in a home office, or next to your favorite chair. Plug directly into electrical outlet. Cord length is 6 feet. Scene Switch shown but sold separately.



15A Relay Switch Case of 12

40A00-1
40A00-1CS

White 15A Relay UPB™ Switch is used for controlling heavier loads (up to 15 Amps) or motors, such as ceiling fans, that may hum when used with Dimming or Non-Dimming switches. Color Change Kit available on page 34.



Auxiliary Switch Case of 12

37A00-1
37A00-1CS

White Auxiliary Switch for remote operation of 35A00, 40A00 and 55A00 dimmers and switches; connectors, instructions. Color Change Kit available on page 34.



UPB™ Lamp Module Case of 12

59A00-1
59A00-1CS

Plug-in Lamp Module controls lamps up to 300 Watts.



**2nd Quarter
2008!**

UPB™ Appliance Module Case of 12

60A00-1
60A00-1CS

Plug-in Appliance Module controls up to 15Amps, general purpose, 1/2 horsepower.



Single Room Lighting Control, with No Programming.

For an easy to set up, fully scalable lighting control kit, use lamp modules, Scene Switches in Table Top Scene Switch Cradles, and the HLC Scene Switch Remote Control.

This stand-alone application is perfect for home theaters, great rooms, master bedrooms & baths, outdoor lighting, and many other possibilities.

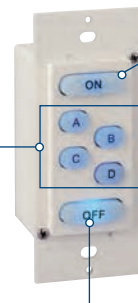
Scene Switch, 6 Button

38A00-1

Case of 12 38A00-1CS

Control all lights in a room or area. Lights may be turned on or off, dimmed, brightened, and set to four different scenes. Setting a scene is as simple as pressing the scene button on the Scene Switch five times. Has Infrared Receiver for use with Scene Switch Remote Control. Includes White bezel, connectors, instructions. Color Change Kit available on page 34. See below for custom engraving.

Set lights to four different scenes to provide options for both security and aesthetic lighting in your home.



Press to turn on all lights in a room. Press and hold to brighten.

Scene Switch

Press to turn off all lights in a room. Press and hold to dim.

NEW

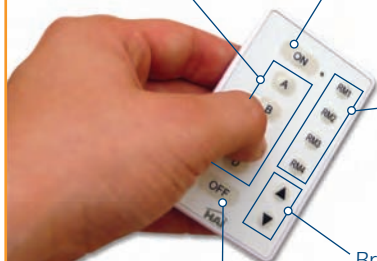
Scene Switch Remote

38A14-1

Works with HAI's Scene Switch. Controls all lights in a room or area. White.

Activate pre-set lighting sequences.

Turn on selected room's lights.



Select which room you wish to control.

Brighten or dim lights.

Turn off selected room's lights.

Custom Engraving



Custom Legend Kit For Scene or House Status Switch

38A06-2

Coupon & instructions for custom laser engraved buttons for 6 button Scene Switch or 8 button House Status Switch. Mail in coupon, receive custom button overlay by mail.

House Status Switch, 8 Button

38A00-2

Case of 12 38A00-2CS

This master lighting control shows the status for up to eight rooms. If any light is on in an integrated room, the button for that room is illuminated. Pressing the room's button will turn on or off all of the lights in that room. Includes White bezel, connectors, instructions. Color Change Kit available on page 34. See above for custom engraving.



House Status Switch

If any light is on in one of up to eight rooms, the button for that room is illuminated. Pressing the room's button will turn all of the lights in that room on or off.





Phase Coupler

Case of 12

39A00-1

39A00-1CS

For 120/240V electrical systems, the Phase Coupler increases the speed and reliability of the HLC system. Although the HLC protocol is extremely robust and less susceptible to powerline conditions, HAI recommends the use of a Phase Coupler in every installation.



UPB™ Powerline Interface

Module & Cable

36A00-1

Case of 12

36A00-1CS

UPB™ Powerline Interface Module (PIM) connects the lighting system to an automation system or computer, which can then control the lights—making the system accessible through the home computer or from a remote location over the Internet.



For advanced programming, UPStart is available for download from HAI's website. Use the above PIM and a cable (HAI part number 36A05-2) to connect the PIM to a computer's serial port.

Color Change Kits

(sold in case lots of 12 only)

Available colors, color codes

Almond	AL
Light Almond	LTA
Black	BL
Brown	BR
Grey	GR
Ivory	IV
White	WH



Scene Switch and Lumina Mode Switch Color Change Kit: White, Ivory, Brown, Almond, Light Almond, Black, Grey

Scene Switch and Lumina Mode Switch

Color Change Kit

38A04-color codeCS

Bezel for 38A00-1 or 38A00-3, instructions.



Switch Color Change Kit: White, Ivory, Brown, Almond, Light Almond, Black, Grey

Switch Color

Change Kit

35A14-color codeCS

Paddle, bezel assembly for 35A00, 37A00 and 40A00 series switches. Part number example: 35A14-ALCS.



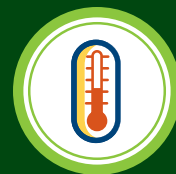
House Status Switch Color Change Kit: White, Ivory, Brown, Almond, Light Almond, Black, Grey

House Status Switch Color

Change Kit

38A05-color codeCS

Bezel for 38A00-2, instructions.



Want to make your home “Greener”?

HAI products make your home greener by making it energy efficient.

- Minimize the use of electricity and reduce bills with temperature and lighting control based on time of day or occupancy of home.
- If a window is open, and the heat or air conditioning is on, a message can be displayed on a Touchscreen.

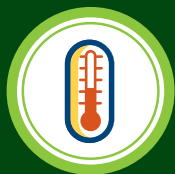


- Log into your home via the Internet with Snap-Link or Web-Link II to monitor energy usage and change your temperature and light settings.
- If you are leaving early from work, call your system and set the temperature to a comfortable level. Great option for vacation homes!



California
Title 24 Compliant





Energy Management



Want to keep your home comfortable while saving money on your energy bill?

HAI is a leader in promoting energy efficiency within the home environment by providing ways to reduce energy consumption, while maximizing comfort.

- The HAI Omnistat line of programmable communicating thermostats and temperature sensors add energy efficiency to your home by adjusting temperatures based on activity such as home or away.
- Proper humidity control helps keep you comfortable while saving energy. HAI offers temperature and humidity sensors that may be used for temperature based control of attics, garages, greenhouses, basements, wine cellars, or coolers.
- Your HAI home control system can turn off lights, water heaters and pumps when the house is unoccupied. Additionally, you can control ceiling and ventilation fans for comfort and energy efficiency.
- HAI's home control systems provide remote access via telephone and Internet, so you may monitor and adjust the temperature of your home anytime.

“If just one household in ten switched to ENERGY STAR® programmable thermostats [such as any model in HAI's Omnistat family] the change would prevent more than 17 billion pounds of greenhouse gases.”



- ENERGY STAR®



Omnistat2 - HAI's Newest Generation of Energy Efficient Thermostats

This new generation of programmable communicating thermostat combines HAI's 20 plus years as a leader in energy management to provide sophisticated and intelligent function in an easy to use device.

According to the Alliance to Save Energy, up to half of your energy bill is just for heating and cooling. The best way to control your energy cost is by managing your heating and cooling system. The Omnistat2 automatically adjusts the temperature for you; so you can do less and save more!



White Omnistat2 showing simplified display and Blue backlight.



2nd Quarter 2008!

Easy to use

- Using advanced digital technology your Omnistat2 "learns" your home's heating and cooling patterns and adjusts control to maximize both your HVAC's efficiency and your family's comfort.
- The backlight comes to life as the Omnistat2 is approached, making it easy to adjust in the dark of the night.
- To adjust the temperature, simply turn the scroll wheel to the right or left.
- Three buttons facilitate easy to navigate menus to display information such as temperature setpoints, modes, outdoor temperature and humidity, run time by week, and more!
- Selectable simplified and advanced displays.

Comfort has never looked so good

The Omnistat2 has three different color options, Black, Silver, and White, in order to match nearly any décor.

Additionally, with over one hundred customizable backlight colors, you may change the backlighting from Blue to Red or any color in between with the turn of the scroll wheel.

"Save up to 10% a year with a programmable thermostat that automatically adjusts the temperature...for the hours that the house is unoccupied."

- Alliance to Save Energy





White Omnistat2 showing advanced display and Green backlight.

Omnistat2 Features...

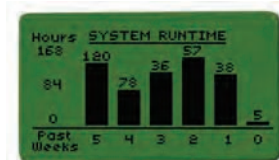
Comfort

Supports conventional and heat pump systems, and dual fuel with 2nd stage auxiliary heat. Supports one external temperature sensor for indoor or outdoor.

- Digital precise temperature control
- Automatic heat/cool changeover
- Fan cycle mode periodically circulates air for comfort
- Displays outdoor temperature and humidity (optional)
- Indoor sensor averaging with remote sensor
- Humidity Control (RC-2000)
- Advanced design does not need batteries to retain settings and time

Energy Management

- Learns how your home heats and cools to intelligently control the equipment for efficiency and comfort
- Graphical display of HVAC usage, by week
- 7 day schedule with copy function
- Temperature settings for Home, Night, Away, and Vacation when integrated with an HAI home control system
- Filter reminder for peak efficiency
- Built-in vacation mode feature - restores temperatures before arriving home



Communication

- Communicates with HAI home control systems and other manufacturer's automation systems
- Remote access via Internet and telephone (optional)
- Expansion port for wireless communication

Style

- Proximity/motion detector, screen lights up when approached
- Choose between one of two display options, based upon what information you want to view
- Multi-color backlight - adjustable at any time
- Available in Black, Silver, and White



RC-1000 Omnistat2 Single Stage Conventional & Heat Pump

Order Thermostat in Desired Color

Black	RC-1000BL
Silver	RC-1000SL
White	RC-1000WH

RC-2000 Omnistat2 Multistage & Heat Pump with Humidity Control



**2nd Quarter
2008!**

The RC-2000 has all features of RC-1000 plus:

- Humidity sensing and display
- Humidifier control
- Dehumidifier control
- Supports 2 stage conventional and 2 stage heat pump with 3rd stage auxiliary heat

Order Thermostat in Desired Color

Black	RC-2000BL
Silver	RC-2000SL
White	RC-2000WH

Planning Ahead...

Easily monitor your home's energy usage with graphs and reports, including real-time energy costs and bills!

Omnistat2 models include the ability to communicate with your utility company for load shedding applications, and the ability to view real-time current energy bills, graphical displays of energy cost per week, and current energy cost. *

As more utility companies begin to use smart metering systems, HAI is leading the charge with the Omnistat2.

Advanced interaction between your home and your utility company can result in reduced energy usage and bills! Contact your local utility company to encourage their participation.



*Displays Energy Details such as current cost as provided by your utility company. **



*Displays Energy Setbacks for medium, high, and critical energy rates. These automatic temperature setbacks allow you to save money on energy bills if rates were to change. **



*This graph allows you to monitor your Energy Cost, broken down by a specified time determined by your energy company. **

*Above features require participation from utility company and may require additional equipment or upgrades.





HAI's Ethernet Module lets you plug your thermostat into a network to access real-time graphs and energy management information on your computer. A great feature for stand-alone thermostat applications!

NEW
3rd Quarter
2008!



Omnistat2 Ethernet Module 65A09-1
Includes micro embedded web server to view and control Omnistat2s over Ethernet networks using a standard web browser. Connects to network using standard Cat 5 wiring.

NEW
2nd Quarter
2008!

Omnistat2 Zigbee® Module 65A10-1
Allows wireless Zigbee® communication to all HAI controllers. Requires Zigbee® Transceiver, HAI part number 65A13-1.

NEW
2nd Quarter
2008!



Omnistat2 Remote Sensor Module 65A12-1
The Remote Sensor Module features two general expander indoor/outdoor sensors. Additional sensors are used for monitoring fault conditions in HVAC.

NEW
2nd Quarter
2008!

Omnistat2 Zigbee® Transceiver 65A13-1
Allows HAI Home Control systems to communicate with Zigbee Modules.



HAI's Omnistat-Z line has a built-in Z-Wave™ transceiver. When used with an HAI controller, the Omnistat-Z communicates wirelessly, making it ideal for retrofit applications.



HAI offers Omnistat and Omnistat-Z programmable communicating thermostats for conventional single stage heat/cool, heat pump, two speed heat pump, two stage conventional, and zone control systems.

Omnistat and Omnistat-Z thermostats have simple-to-use controls. The large LCD display with “cool blue” backlight shows time, temperature, and operational mode.

Omnistat and Omnistat-Z thermostats are fully interactive with all HAI home control systems and are compatible with most others. They may be controlled both locally and remotely.

The Omnistat-Z will work with any Z-Wave network. When connecting the Omnistat-Z to an HAI controller, use the Leviton Vizia RF to RS232 Serial Bridge (Leviton part number RZCOP-1LW).

Omnistat Single Stage Heat/Cool RC-80B **Omnistat-Z Single Stage Heat/Cool RC-80BZ**

- Single stage heating and cooling systems, non heat pump
- 1 stage heat, 1 stage cool
- Can be set to heat only or to cool only
- Can power steal for retrofitting heat/cool systems with only 4 wires
- Adjustable anticipator
- Use for forced air, radiant heat, hydronic heat, steam, electric, gas, oil, etc.

Omnistat Single Stage Heat/Cool for Zoned Systems RC-90B

Omnistat-Z Single Stage Heat/Cool for Zoned Systems RC-90BZ

- Single stage heating and cooling systems
- Zoned damper controls systems
- 1 stage cool, 1 stage heat with B and O terminals for master control

Omnistat Heat Pump RC-100B **Omnistat-Z Heat Pump RC-100BZ**

- Single stage heat pumps with auxiliary heating
- 2 stage heat, 1 stage cool
- Energy Efficient Control of auxiliary heat to save energy (EEC can be turned off if not desired)
- Automatic anticipator
- Use for geothermal, water source heat pumps, or air to air heat pumps with electric, hot water or other source of auxiliary heat





Omnistat Two Speed Heat Pump RC-112B Omnistat-Z Two Speed Heat Pump RC-112BZ

- 3 stage heat, 2 stage cool
- Energy Efficient Control of auxiliary heating (EEC can be turned off if not desired)
- Automatic anticipator
- Use for two speed heat pumps, two stage heat pumps, WaterFurnace™ heat pumps with Premier Control System

Omnistat Two Stage Heat/Cool RC-122B Omnistat-Z Two Stage Heat/Cool RC-122BZ

- 2 stage heat, 2 stage cool
- Energy Efficient Control of second stage (EEC can be turned off if not desired)
- Automatic anticipator
- Use for forced air systems with two speed furnace, two speed air conditioner, two stage furnace and/or two stage air conditioner, electric, gas, oil or other fuel
- Works with most variable speed units

Omnistat Accessories



23A00-1



23A00-2

Surface Mount

Remote Indoor Temp Sensor 23A00-1

Surface indoor temperature sensor for Omnistat thermostats.

Flush Mount

Remote Indoor Temp Sensor 23A00-2

Flush indoor temperature sensor for Omnistat thermostats.



29A00-1



30A00-1

Thermostat Isolation Module 29A00-1

Relay isolation module for RC-80B and RC-80BZ Omnistat thermostats, mounting clips, instructions *(May be needed for HVAC systems using non-standard voltages).*

Thermostat Power Supply Module 30A00-1

Power booster for RC-80B and RC-80BZ Omnistat thermostats, instructions *(May be needed in retrofit applications when "HVAC common" wire is not available).*

Energy Management Accessories



HAI sells temperature and humidity sensors that may be used for controlling temperatures in attics, garages, greenhouses, basements, wine cellars, and coolers.

Use the water temperature sensor to supervise and manage pool and spa temperatures.



Water Temperature Sensor

14A00-8

Water Temperature Sensor Module, probe, accessories, instructions. Allows you to monitor and activate programs based on water temperature. Can be used for pools, spas, aquatic ponds, fish tanks, greenhouses, etc.

ENHANCED
in 2007!



Extended Range Indoor/Outdoor Temperature & Humidity Sensor

31A00-8

Indoor/Outdoor temperature sensor from -40° to 120°F and humidity sensor, accessory kit, instruction sheet. Must be connected directly to the HAI controller using a four conductor wire. For enhanced accuracy, it may be calibrated after installation.

ENHANCED
in 2007!



Extended Range Indoor/Outdoor Temperature Sensor

31A00-7

Indoor/Outdoor temperature sensor from -40° to 120°F, accessory kit, instruction sheet. Allows you to monitor and activate programs based on temperatures. Can be used outdoors, in attics, basements, wine cellars, etc. Must be connected directly to the HAI controller using a four conductor wire. For enhanced accuracy, it may be calibrated after installation.



PESM

1101A

The PESM is used to override existing thermostats for set-back control or for sensing and controlling other temperatures, such as attic fans, garage fans, greenhouses, basements, wine coolers, humidors, etc.



HAI



Whole Home Audio



Hi-Fi by HAI



A Revolutionary Whole Home Audio System



Hi-Fi by HAI allows you to share your music throughout your home, using the sources you already own!



Mom can listen to relaxing jazz on the satellite radio in the kitchen, while dad listens to the big game as he barbeques outside, and the kids jam away to rock upstairs! Or set them all to listen to the same source and volume.

With Hi-Fi by HAI, you have the ability to listen to different sources at the same time at different volume levels throughout your home. Hi-Fi comes standard as a four zone, four source kit, and is expandable to eight zones, six sources.

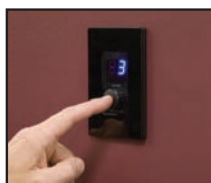
What Makes Hi-Fi Revolutionary?

Traditional Whole Home Audio Systems require your music source equipment to be in a central audio rack and many of them require this source equipment to be proprietary brands. Hi-Fi allows you to listen to the music sources that you already own or any brand that you wish to purchase. These sources can be located throughout the house.

How Is This Done?



The main controller of your Hi-Fi is mounted in a closet or basement. Remote Input Modules (RIMs) are installed in rooms that have music sources, such as CD players, computers, iPods™, satellite radios, TVs, etc. The sources are plugged into the RIMs so you can enjoy your favorite tunes in any room!



Controlling Hi-Fi couldn't be easier. There are no confusing buttons, just one knob and a display. Simply mount a Volume-Source Control (VSC) in any room that has speakers that you wish to control. The VSC gives you the ability to play any music that's connected to a RIM - no matter if the RIM is in the same room or not!

Using the VSC is Easy

- Turn the knob to adjust volume.
- Press the knob to change the source.
- Press and hold the knob to alter bass, treble, or to turn the entire system on/off.





The VSC and RIM come in White but are also available in Almond, Black, and Ivory to match the style of any room.

Use a Remote Control



Hi-Fi by HAI allows the convenience of remote control. Your Hi-Fi comes with a basic source and volume remote. You can also purchase a Hi-Fi programmable remote that is compatible with your source equipment.

Additionally, you may also point your original source equipment remote at any VSC, regardless of what room you're in, to change stations, CD tracks, pause, play, mute, or crank up the sound!

Add Additional Zones

For every zone desired after the initial four, an additional Zone Amplifier Card must be installed. Up to four additional Zone Amplifier Cards may be installed for the Hi-Fi by HAI to accommodate up to the full eight zones.

Hi-Fi has an expansion kit that comes with everything you need to have Hi-Fi reach its maximum capacity. If more power is desired, there are two outputs for additional power amplifiers.

Easily Upgrade to the Newest Technology

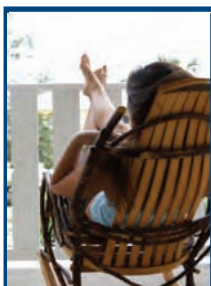
When you want to upgrade to the newest source equipment, you won't have to cut holes in the wall or alter an audio rack to accommodate new wiring and equipment. Simply unplug your old source, such as a CD player, from the RIM, and plug in the latest and greatest iPod™.

Connect Hi-Fi to an HAI Home Control System

Hi-Fi by HAI may be used as a stand-alone system or with an HAI home control system. With a home control system, you may coordinate your music with activities in the home.

- Set every room to the iPod™ and preset the volumes for a party.
- Mute bedroom and outdoor zones when it's bedtime.
- Turn the entire system off when leaving the house.
- Use your telephone to page throughout the house.

Use any of HAI's user interfaces to control Hi-Fi, including OmniTouch Touchscreens, consoles, keypads, Snap-Link, Home Control for Windows® Media Center, and Web-Link II.



Listen to music from your living room CD player as you relax on your patio. Use your CD remote to change songs or adjust volume without leaving the comfort of your lawn chair!



Never miss a play!
Listen to the big game throughout the house!





Whole Home Audio

Graphically Control Hi-Fi When Connected to an HAI Home Control System



*Control Hi-Fi wirelessly
with the OmniTouch
Portable 8.*



*Control the volume and
source of any zone with any
OmniTouch Touchscreen.*

Technical Specifications

Power is 40 watts RMS per zone at 4 ohms. The audio signal from the source is connected at the RIM and travels over Cat 5 to the main unit. The VSC is also connected to the main unit using Cat 5.

The Class D digital amplifiers are in the main unit, (not in the VSC) so amplifier power is not hindered by Cat 5 wire. Speakers are connected to the main unit using standard 16 gauge speaker wire. There are two variable outputs (Zones 1 and 8) for connection to external power amplifiers, and a page/mute input.

Signals from remote controls are picked up by a sensor in the VSC and routed to the RIM that the VSC has selected as its source. Signals for source equipment are sent out the "IR Out" port on the RIM to control the source.



Easy to Operate. A single knob controls volume, source and more! No programming required.

Affordable High Fidelity Performance. Clear and powerful Class D digital amplifiers. Plus, it's a modular system so it's easy to expand at a later date.

First System with Remote Input Modules. Enjoy music from sources throughout the house. No audio rack required.

CHECK IT OUT!

A demo for Hi-Fi is available on HAI's website. Complete with sound, the interactive demonstration shows the benefits of Hi-Fi and how it works in your home!





Hi-Fi by HAI Products



Hi-Fi by HAI 4 Zone, 4 Source

Kit with Enclosure

62A00-1

Includes Hi-Fi Main Board Assembly with 4 installed Zone Amplifier Cards with vented enclosure, 4 Remote Input Modules, 4 Volume–Source Controls, Power Supply, 1 Remote Control (62A05-1), cable for HAI controllers, manuals.



Hi-Fi by HAI 4 Zone, 4 Source Kit for Structured Wiring Enclosures

62A00-2

Hi-Fi Main Board Assembly with 4 installed Zone Amplifier Cards on Universal Mounting Plate, 4 Remote Input Modules, 4 Volume–Source Controls, Power Supply, 1 Remote Control (62A05-1), cable for HAI controllers, manuals.



Hi-Fi by HAI Expansion Kit (to 8 zones, 6 sources)

62A12-1

4 Zone Amplifier Cards, 2 Remote Input Modules, 4 Volume–Source Controls, power supply, manuals.

Remote Control

62A05-1

Remote Control for volume and source selection. One included in 62A00-1 and 62A00-2.

The palm-sized basic remote is backlit with cool blue LED lights.



Turn Hi-Fi on or off, mute a zone, select the source you would like to listen to, and adjust the volume.

Programmable Remote Control

62A06-1

Remote Control for volume and source selection with programmable source control functions.

Features the same functionality as a standard programmable remote control, such as channel up/down, volume up/down, pause/play, etc. Controls source equipment such as iPods™, receivers, or DVD players.

Turn Hi-Fi on or off, mute a zone, select the source you would like to listen to, and adjust the volume.



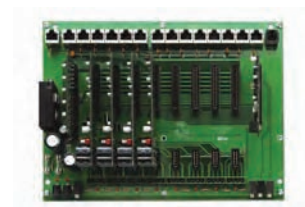
The 8 buttons at the bottom of the remote are for macros. Macros can be used to control home theater operations, set a favorite channel, adjust lighting, or for other multiple functions you would like to control with one key press.





Volume-Source Control (VSC) 62A03-1

White rotary volume control with push source selection and IR receiver. Includes White Wallplate. Almond, Black, and Ivory colors are available through VSC Color Change Kits on page 49.



Hi-Fi by HAI 4 Zone, 4 Source Main Board Assembly 62A01-1

Hi-Fi Main Board Assembly with 4 installed Zone Amplifier Cards.



Remote Input Module (RIM) 62A04-1

White Remote Audio Input/IR output module. Includes White Wallplate. Almond, Black, and Ivory colors are available through RIM Color Change Kits on page 49.



Zone Amplifier Card (ZAC) 62A02-1

Zone Amplifier Card for 1 stereo zone, instructions.



Hi-Fi by HAI Retractable Cable 62A13-1

3.5 mm male to 2 RCA male patch cable. Extends to 4 feet. Use to connect TVs, CD players, home theater and stereo components to Hi-Fi's RIM.



Hi-Fi by HAI Retractable Cable 62A14-1

3.5 mm male to 3.5 mm male stereo patch cable. Extends to 4 feet. Use to connect MP3 players, iPods™, computers with headphone and/or audio outputs to Hi-Fi's RIM.



Universal Mounting Plate

20A07-2

Mounting plate, hardware kit & instructions. Used to mount Hi-Fi Main Board Assembly in Leviton, OnQ/ Legrand, UStec, and "open house" type structured wiring enclosures.



IR Flasher

62A08-1

IR flasher (emitter) with 6 foot cord. Connects to Remote Input Module's routed IR emitter jack to allow use of source equipment remote in any room that has a Volume-Source Control.



Vented Enclosure

62A09-1

Enclosure for Hi-Fi with vents, door latch mounting plate, hardware kit and instructions.



Power Supply

62A07-1

Universal Power Supply for Hi-Fi zones 1 to 4 or 5 to 8.

VSC Color Change Kits



Case of 12

Almond	62A11-1ALCS
Black	62A11-1BLCS
Ivory	62A11-1IVCS
White	62A11-1WHCS

RIM Color Change Kits



Case of 12

Almond	62A10-1ALCS
Black	62A10-1BLCS
Ivory	62A10-1IVCS
White	62A10-1WHCS



Surveillance

Keep an Eye on Your Home

View and/or Record Video for Safety and Convenience



Ensure security and peace of mind with surveillance video of your home.



When the front door bell rings or motion is detected in the pool area, the video feed can automatically appear on a Touchscreen or TV* in your home.

**Requires third party modulator.*



View surveillance video of the front door, nursery, or pool area.



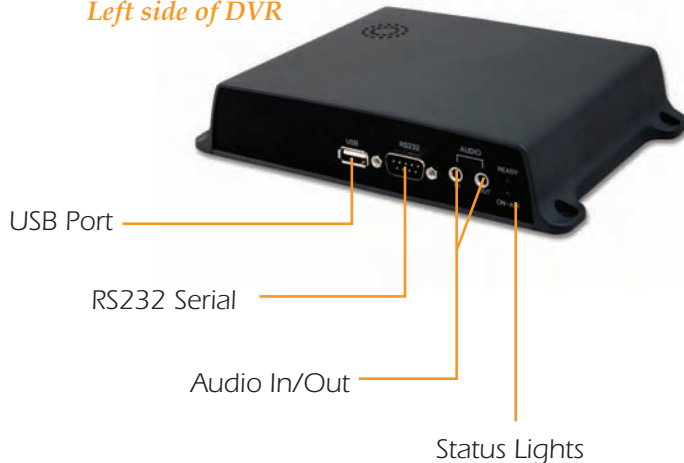
On vacation and worried about the safety of your home? Want to check up on children, elderly relatives, or pets from your office? HAI's surveillance video may be viewed remotely on a Smartphone/PDA, or via Snap-Link on any Internet-connected computer in the world.



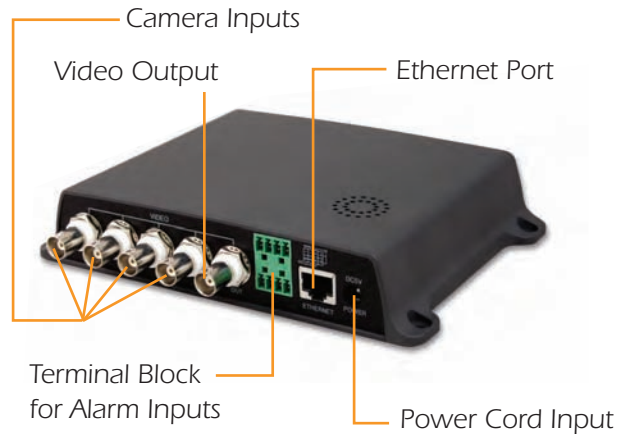
Use HAI's Network Digital Video Recorder to record video based upon time, event, or motion. View recorded video at your convenience.



Left side of DVR



Right side of DVR



TECHNICAL SPECIFICATIONS:

4 Composite Inputs

1 Composite Output

Highly reliable Embedded LINUX operating system

MPEG-4 compression

High Resolution (up to 720 x 480 @ 30fps)

Internal 80 GB hard drive

USB 2.0 port to add additional storage

Two-Way Audio

Static and Dynamic IP Support

RS232 and RS485 Support

Alarm Input

2 Relay Outputs

Network Digital

Video Recorder (DVR)

68A00-1

This 4-channel DVR is the perfect tool to monitor the safety and security of your home. Keep an eye on who is at the front door, what is going on by the pool, or check on the baby's room while you are at home or away.

Connects to any analog surveillance camera including HAI's Indoor Dome Camera (HAI part number 68A01-1) and HAI's Day/Night Color Bullet Camera (HAI part number 68A02-1). Cameras can be viewed on the OmniTouch 5.7e, OmniTouch 8, OmniTouch Portables, over the Internet, or on your Smartphone.

The Network Digital Video Recorder can also record based on motion or any other event and the recordings can be viewed on or offsite. Included client software allows you to view live and recorded video for up to 16 cameras at the same time. Network DVR can be used stand-alone or with an HAI home control system. Structured Wiring Backplate available on page 52.

Wiring:

- Cat 5 for network
- BNC connections for Composite Video
- Shielded cable required for Two-Way Audio



Day/Night Color Bullet Camera

68A02-1

- 1/3" CCD Sensor
- High Resolution - 550 TV Lines (Color), 600 TV Lines (B/W)
- Day/Night Function with ICR
- 3.8~9.5mm, DC Auto Iris
- 0.1 Lux (Color), 0.01 Lux (B/W), 0.002 Lux (DSS On)
- 36 IR LEDs
- Separate Camera Control Board
 - On-Screen Display Menu
 - Service Monitor Output
- 12VDC/24VAC Dual Voltage
- Aluminum Housing (Weatherproof)
- Aluminum Bracket (Wire Feed-Through)
- Power supply required



Indoor Dome Camera

68A01-1

- 550 TV Lines
- 0.1 Lux (Normal), 0.002 Lux (DSS On)
- Separate Camera Control Board
 - On-Screen Display Menu
 - Service Monitor Output
- 12VDC/24VAC Dual Voltage
- 4" Polycarbonate Bubble
- 3-Axis Gimbal
- Flush Mount Housing with Surface Mount Plate in a single package
- Ivory Plastic Housing
- Compact Size
- Power supply required



Universal Mounting Plate Kit for Network Digital Video Recorder

68A04-1

Mounting Plate, hardware kit, and instructions. Used to mount Network Digital Video Recorder, HAI product number 68A00-1, in Leviton and "open house" type structured wiring enclosures.



DVR Shown but not included



How would you like to access and control your HAI system?

HAI offers many options to access and control your Omni or Lumina family system. Choose from one of the OmniTouch Touchscreens, consoles, keypads, or software interfaces. All Omni family systems have built-in telephone access and Lumina family systems have an optional Telephone Access Kit.



HAI brings you options



HAI OmniTouch 5.7



HAI SNAP LINK



home control

for your HAI Omni or Lumina system

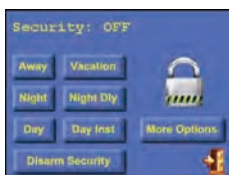


Touchscreens

An HAI OmniTouch Touchscreen Can Control:



Security



Easily adjust security functions with one touch.

Arm, Disarm, set to Vacation or Away.

View an event log to see who accessed the security system and at what time.

(Omni family controllers only.)



Energy Management



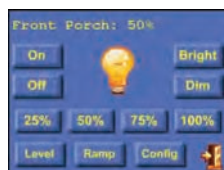
View indoor and outdoor temperatures and humidity.

Adjust the heating or cooling within a room or whole house.

View humidifier or wine cellar temperatures and monitor water temperature sensors.



Lighting Control



Adjust the lighting in any room.

Easily dim, set up timing sequences, or turn all lights on/off by switch, by room, or by house.



Whole Home Audio



Control Hi-Fi by HAI or an audio system from one of HAI's Connectivity Partners.

Emulates the NuVo, Russound, SpeakerCraft, Proficient, and Xantech audio keypads for a clutter-free appearance with full functionality. (See HAI Connectivity Partners for exact models.)



An HAI OmniTouch Touchscreen Can Control:



Status

One touch gives you the status of the home's security, temperatures, lighting, and energy usage.



Surveillance Video

View and/or record full screen video feed from cameras directed at the front door, pool, nursery, etc.

Additionally, you may press the camera selection button to release a door strike and let your visitor inside!



Buttons

Buttons are a way to quickly initiate a chain of commands, or to initiate a function that is not already assigned an icon.

Have a "Water Lawn" button to turn on the sprinkler system.

Or have a "Romantic Evening" button to drop the shades, turn on the whole home audio system, dim the lights, and activate other features controlled by an HAI home control system.



Touchscreens

NEW



HAI OmniTouch 5.7

OmniTouch 5.7

53A00-1

Spanish OmniTouch 5.7

53A00-3

The award-winning OmniTouch 5.7 is a colorful "plug and play" Touchscreen with large icons to control lights and small appliances, monitor and adjust security and temperatures, pool and spa temperatures, ventilation, decorative lighting, Whole Home Audio systems, surveillance video, and other items under the control of an HAI Home Control system.

- Large 5.7" LCD display using TFT technology for rich colors and improved viewing angles.
- Displays full screen video. (Touchscreen Hub and Video Encoder necessary for video.)
- Improved Video Update Rate from previous OmniTouch versions.
- Speaker instead of beeper for more pleasing audible tones.
- A built-in USB connector allows you to update to the newest version of firmware at any time easily and for free!
- Includes White faceplate, Color Change Kit available.
- Compatible with all HAI controllers.

NEW

3rd Quarter 2008!



HAI OmniTouch 5.7e

OmniTouch 5.7e

53A00-2

- Single Ethernet connection for all communication as well as power, using Power-Over-Ethernet (POE) technology.
- Direct access to IP cameras.
- Two-way IP-based audio intercom.
- Firmware updates via network.
- Includes White faceplate, Color Change Kit available.
- Compatible with all HAI controllers, except Omni LT.

COLOR CHANGE KITS

OmniTouch 5.7 & OmniTouch 5.7e

Almond	53A05-AL
Black	53A05-BL
Ivory	53A05-IV
Light Almond	53A05-LTA
Silver	53A05-SL
White	53A05-WH

Match the style of any room!



Browse the Internet from Your Touchscreen!



OmniTouch 8

Order Touchscreen in Desired Color

Black **66A00-BL**

White **66A00-WH**

The OmniTouch 8 is a wall mounted OmniTouch Touchscreen with an 8.4" TFT display connected to a network via an Ethernet port.

The OmniTouch 8 allows for customized updates of traffic, weather, and stock information, among other items. It also can download music from Internet music servers, and select and play music from home music servers such as iPods™ and other items on the network. Does not require a whole home audio system for the music capabilities.

Requires Cat 5 and 110V electrical power. Compatible with most web cameras that run on Windows operating systems, including HAI's 4-Channel Digital Video Recorder.

It is fanless and diskless for quiet and reliable operation. The OmniTouch 8 operating system is Windows® Embedded XP and includes Internet Explorer and HAI's Snap-Link software pre-loaded. Compatible with all HAI controllers, except Omni LT.

NEW
2nd Quarter
2008!



OmniTouch Portable 8

67A00-1

This table top version of the OmniTouch 8 comes with built-in Wi-Fi. All features of the OmniTouch 8 are available on the OmniTouch Portable 8. Available in Black only. Docking cradle with charging capabilities available on page 58.

- 8.4" TFT Active Matrix LCD at 800 x 600 SVGA resolution-Integrated Touchscreen display with soft keyboard support
- Compact Flash™ slot; PC Card Slot; USB port
- Full 16-bit audio with stereo; headset jack; built-in stereo speakers and microphone
- Programmable 3-way Navigation button and multiple hard buttons
- Includes removable protective rubber bumpers for ruggedness
- Compatible with all HAI controllers, except Omni LT.



Touchscreens



**2nd Quarter
2008!**



OmniTouch Portable 10

67A00-2

This table top version is similar to the OmniTouch Portable 8, but adds additional features such as increased screen size. All features of the OmniTouch Portable 8 are available on the OmniTouch Portable 10. This version is available in Black only.

- 10" TFT Active Matrix LCD with soft keyboard support
- 1024 x 768 screen resolution
- Features two USB ports, one serial port
- Full 16-bit audio with stereo; headset jack; built-in speakers and microphone
- Multiple hard buttons
- Removable protective rubber bumpers for ruggedness
- Compatible with all HAI controllers, except Omni LT



**2nd Quarter
2008!**



Docking Cradle for

OmniTouch Portables

67A01-1

Black table top display for OmniTouch Portables. Docking Cradle has charging capabilities, and includes a USB and an Ethernet port. (OmniTouch Portables not included.) For use with OmniTouch Portable 10 and Portable 8.

**Download Technical Specifications
and view an online demonstration
of the OmniTouch.**

<http://www.homeauto.com>



OmniTouch 5.7 Touchscreen Accessories

OmniTouch 5.7 Touchscreen Accessories

A Touchscreen Hub and Video Encoder are required to display video on the OmniTouch 5.7.

A Touchscreen Hub provides battery-backed power for multiple Touchscreens, cameras and the Video Encoder. The Touchscreen Hub supports up to eight OmniTouch Touchscreens. Video inputs on the hub are composite single RCA jacks.

With a Touchscreen Hub with Video, camera feeds may be shown on your TV as well as an OmniTouch Touchscreen. The Video inputs can loop through to feed a Digital Video Recorder (DVR) or modulator.

MAXIMUM 5.7 TOUCHSCREENS:

Home Control System	MAX 5.7 Touchscreens*	Number of Touchscreens Requiring Touchscreen Hub
Omni LT	3	2-3
Omni IIe	7	3-7
OmniPro II	15	3-8; 9-15 requires 2 Hubs
Lumina	7	3-7
Lumina Pro	15	3-8; 9-15 requires 2 Hubs

* Assumes the use of the one required console or keypad. Note that for every additional console or keypad used, this maximum number of OmniTouch 5.7 Touchscreens decreases by one.



Touchscreen Hub with Video in Enclosure 32A30-1

Includes Touchscreen Hub with Video Encoder in enclosure, power supply, instructions.



Touchscreen Hub with Video, for Structured Wiring Enclosures 32A30-2

Includes Touchscreen Hub with Video Encoder on Universal Mounting Plate, power supply, instructions.

Touchscreen Hub, No Video, Enclosure 32A30-3

Includes Touchscreen Hub in enclosure, power supply, instructions.

Touchscreen Hub, No Video, for Structured Wiring Enclosures 32A30-4

Includes Touchscreen Hub on Universal Mounting Plate, power supply, instructions.

Touchscreen Hub Board Only 32A31-2

Video Encoder 32A32-1

A video encoder is required for an OmniTouch 5.7 in order to display video. The Video Encoder mounts on the Touchscreen Hub. It digitizes video signals from the cameras to send to the OmniTouch with Video or OmniTouch 5.7. Includes Video Encoder circuit board and connector, instructions.

Touchscreen Hub Replacement Power Supply 106080

Switching power supply brick for use with Touchscreen Hub.



Consoles and Interface Accessories

These products will work with all controllers except as noted.

**Wireless Interface
Options available
on page 74**



*console not
included

Flush Mount Kit 33A00-3

White, Flush Mount Backbox for use with 33A00-1, 33A00-4, 33A00-19, or 33A00-20 consoles or keypads (not included), mounting bracket, instructions.



Omni Console 33A00-1 Case of 12 33A00-1CS

Cool blue LCD surface mount console, silk screened front, connector kit, instructions *(Omni family only)*.



Lumina Mode Switch 38A00-3

This 6 button keypad allows you to press one button, Sleep, Home, Vacation, Away, Party, or Special, to initiate a program for preset lights, temperature, and audio for the entire home. White bezel standard.

Color Change Kit available on page 34. See diagram on page 26. (Grey bezel shown. Uses standard Decora-style Wallplate. Wallplate not included.) *(Lumina family only)*.

Omni Console with Built-in Speaker/Microphone 33A00-4

The microphone may be used to listen inside your home while on-site or remotely via telephone. The speaker may be used to broadcast messages based upon system programming or be used to communicate with someone inside the house. Requires Two-Way Voice Module, HAI part number 10A11-1. See special wiring instructions on page 86. *(Omni family only)*.



Telephone Access Kit 44A01-1

RJ-31X jack and cord. Allows access and control of all Lumina and Lumina Pro system functions over the phone. It also enables the system to call up to eight different phone numbers

for notification of programmed events at home. *(Lumina family only; Omni family has telephone access built-in)*.



Lumina Keypad 33A00-19

Allows set up, programming and control of the Lumina and Lumina Pro system. LCD surface mount keypad, silk screened front, connector kit, instructions. *(Lumina family only)*.

Lumina Keypad with Built-in Speaker/Microphone 33A00-20

LCD surface mount keypad with built-in speaker/microphone, silk screen front, connector kit, instructions. 10A11-1 Two-Way Voice Module required. See special wiring instructions on page 86. *(Lumina family only)*.



HAI Access Control Keypad 54A00-1

A weatherproof and vandal resistant piezoelectric keypad designed to interface with HAI home controllers. The piezoelectric buttons work simply by tapping the surface, and do not require an actual physical movement. The sleek keys of the outdoor keypad can be operated with a bare finger or a snow-covered glove equally well. Stainless steel outdoor keypad, cable assembly, instructions. Connects via serial port on HAI controller. *(Does not use a console/keypad port on the console bus)*.



Interface Options

HAI offers several different software products to access, control, or program your Omni or Lumina home control system.

HAI SOFTWARE COMPARISON CHART					
	Snap-Link	Snap-Link Mobile	HAI Home Control	Web-Link II	PC Access
Part Numbers	1120	1120M	1109	1108	1105W, 1106W, 1111, 1105WSP
Access via Internet	Yes	Yes	Remote Desktop	Yes	Yes
Dedicated Computer On-site	No	No	Yes	Yes	No
Client Software	No (runs on client)*	No (runs on client)*	Application	No (uses Standard web browser)	Yes (installed on client)
Installation Components	No installation (Plug and Go)*	Application	No	Web server and application	Application
Subscription Fee	No	No	No	No	No
Video Surveillance	Link to installed IP Web Camera	Link to installed IP Web Camera	Yes	Yes	No
Video Recording	No	No	Yes	Yes	No
Notifications	E-mail, messaging, pop-up notifications, visual	Optional pop-up notifications, audible, and visual	Pop-up notifications, audible, and visual	E-mail, messaging, and visual	No
User Interface	PC application	Windows® Mobile Application	Televisions with remote control	Web Browser	PC application
Additional Interfaces Supported	Ultra Mobile PC	Windows® Mobile based PDA's, Smartphone	Additional television/monitors using Media Center Extenders	PDA's, Smartphones, Web Tablets, and Touchscreens	None
Configure System	No	No	No	No	Yes
Program System	No	No	No	No	Yes
Create Rules/Alerts	Yes	No	Yes	Yes	No
Selectable Skins or Themes	Yes	No	No	Yes	No
Web Updates	Yes	Yes	Yes	Yes	Yes
RSS (Real Simple Syndication)**	No	No	No	Yes	No
Operating Systems	Windows® ME and higher	Windows® Mobile 5.0 and higher and .NET Compact Framework 2.0	Windows® XP Media Center Edition software, Windows® Vista Home Premium	Windows® XP Professional, Windows® 2000, Windows® Server 2003, & Windows® Vista***	Windows® 98E & higher, Windows® Vista Ultimate, Windows® Vista Home Premium

* Does not require installation on PC. Application can run from thumb drive, flash drives, or other removable media.

** Displays RSS feeds such as latest news, weather reports, personal blogs, and much more.

*** Compatible Vista versions are Windows® Vista Home Premium, Vista Ultimate, Vista Business, or Vista Enterprise.



Snap-Link

ENHANCED
in 2007!

1120



HAI's multi-award winning Snap-Link can quickly adjust and check lights, temperature, audio and security settings on the go! Just plug Snap-Link into any computer and it directly communicates through the Internet to the secure Ethernet port on your HAI system at home. No on-site computer is needed.

Snap-Link is easy to use and easy to set up because it is self-contained on the USB drive. There is no installation of the program, just unplug the drive and no residue of the application is left on the computer.

It uses 128 bit encryption, which makes it vastly safer than other products that use web pages over non-encrypted connections.

Snap-Link is sold **WITHOUT** any subscription fees. Registered users of Snap-Link can update to the latest version for **FREE** at any time by clicking on the Update link.

Snap-Link requires an Ethernet-enabled HAI controller, including OmniPro II, Omni IIe, Lumina Pro, and Lumina.

Snap-Link now controls Whole Home Audio systems by HAI, NuVo, Proficient, Russound, SpeakerCraft and Xantech. Snap-Link also has the ability to be plugged into an Ultra Mobile PC to be used as a wireless Touchscreen!

Foreign language versions of Snap-Link coming in 2008: French, Spanish, Italian, Catalan, and Castellano.

Visit HAI's website for demonstrations of Snap-Link.

Snap-Link Can Control:



Security



Monitoring and controlling security features is easy.

Arm or disarm the alarm, view a security log, or select to bypass or restore an individual zone (area).



Energy Management



Conserve energy while maintaining the comfort level within your home. Adjust heating and cooling by zone.

View humidity and outdoor temperatures. Adjust the temperature in your home before leaving work.



Lighting Control



Conveniently check and adjust your home's lighting scenes.

Dim lights, set timers, control individual lights, or turn all lights on/off by room or by house.



Whole Home Audio



Select music source and adjust volume levels in individual rooms or whole house.

Control Hi-Fi by HAI or an audio system from one of HAI's Connectivity Partners.



Snap-Link Can Control:



Wireless Options



Snap-Link has an "OmniTouch" theme that emulates the look of an OmniTouch Touchscreen. Plug HAI's Snap-Link into a handheld device, such as an Ultra Mobile PC, and have Touchscreen access on a fully functioning PC that may be carried around the house. It places wireless home control in the palm of your hand!



Surveillance Video

Use IP cameras to see your home from anywhere in the world! Scroll through cameras to view boat docks, front doors, pool areas, etc.

Check up on sick or elderly relatives when you can't be physically present. Record video based on motion, event, or time.

Convenient

Plug the USB drive into any computer and Snap-Link becomes available.

There is no installation of the program, and when you are finished, unplug the drive, leaving no residue of your home's information behind.



Keep Snap-Link on your keychain and have access to your home whenever and wherever!



Alerts & Notifications



Snap-Link automatically sends alerts via e-mail, cell phone, or pager, based upon specified events.

Example: Brenda gets home from school and enters her user code into the HAI Omni family home control system to disable the security system. Accordingly, an e-mail is automatically sent to her mother's work e-mail address informing her that her daughter is home.



Snap-Link Mobile

1120M

Snap-Link Mobile allows you to monitor and control lights, security, audio, temperatures, and webcams on handheld mobile devices, such as PDAs, Smartphones, or other devices running Windows® Mobile operating software.

Snap-Link Mobile puts control of all home functions in the palm of your hand! Simply click on the HAI logo that appears on your phone/PDA and you have instant access to your Snap-Link home control page. From there you can:

- Conveniently control individual lights, turn off all lights in the home or room, dim lights or adjust preset lighting scenes
- View real time video of surveillance cameras - see your front door, pool, boat dock, etc. *
- Conserve energy by adjusting heating and cooling and view humidity and outdoor temperatures
- Arm or disarm the alarm, view a security log to monitor activity of housekeepers, nannies, etc.
- Control your Whole Home Audio system! Select music source and adjust volume levels in individual rooms or the whole house

** Requires appropriate cellular provider plan and cameras.*

NEW
1st Quarter 2008!



Snap-Link Mobile is designed specifically for a mobile device with a Touchscreen, navigation key, or scroll wheel. It tunnels directly into the HAI home control system through a secure AES encrypted connection. Requires an HAI Omni IIe, OmniPro II, Lumina, or Lumina Pro home control system installed in the home.

Snap-Link Mobile is sold without subscription fees and users receive updates for free. Snap-Link does not rely on any third parties to work other than cellular service. There is no set-up for Snap-Link Mobile other than the initial installation.

HAI's Snap-Link Mobile is downloaded directly into a mobile device. It features secure encrypted communications over Wi-Fi or cellular data networks.

Pronto Link For Philips

1125

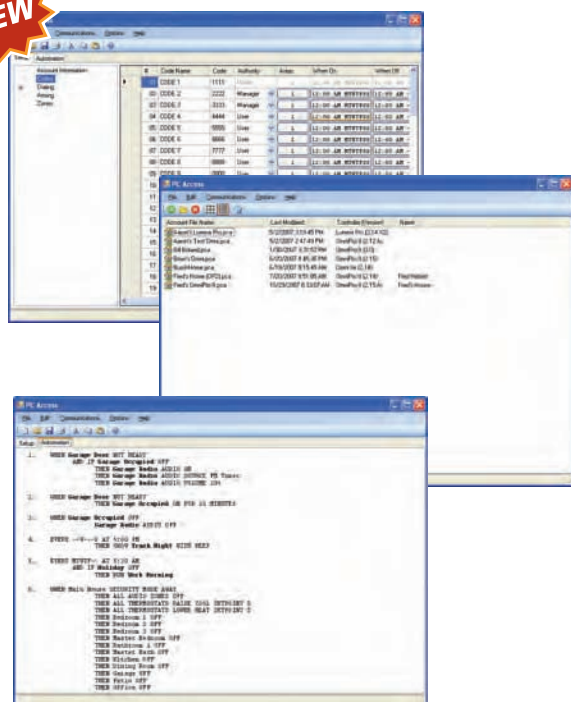


Allows Philips TSU9600 Pronto remote to control HAI Omni and Lumina family automation systems, as well as standard home theater components.

Use a single remote to control the home theater; adjust lights, temperatures, and security settings; control whole home audio systems, such as Hi-Fi by HAI. Installers can easily merge the HAI functionality into a standard Pronto project, as HAI is pre-programmed into the Pronto Script integration module. The Pronto Link is a free download.

It's even easier to program an HAI system with the new PC Access!

NEW



PC Access Software

PC Access allows the user to set up, program, and monitor a home control system over a modem or by a serial or network connection. PC Access is the only software product HAI offers that has the ability to program an HAI home control system. Registered users receive free updates.

Completely redesigned with a contemporary look and feel.

New Features Include:

- Enhanced automation programming:
 - ability to save programs to disk for reuse
 - ability to add comments to programs
 - simplified program editing
 - search and replace
 - support for enhanced programming with multiple triggers, conditions and commands in a single statement
- Integrated help and documentation
- Account summary page
- Fewer mouse clicks and keystrokes
- Easy tree-based navigation
- Simplified set up where all names and related properties of an object can be edited on a single page
- All lists can be sorted and/or filtered
- Supports longer, more descriptive, "friendly" names
- Ability to name UPB™ links and other lighting scenes
- Integrated firmware updater for new flash-enabled controllers

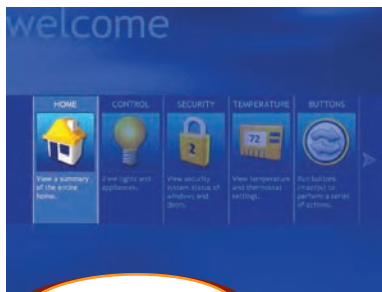
Dealer PC Access	1105W
Spanish Dealer PC Access	1105WSP
End User PC Access	1106W
Lumina PC Access	1111

Home Control for Windows® Media Center

1109



Changing lighting, temperature and security is as easy as changing channels!



**ENHANCED
For VISTA!**

HAI's award-winning Home Control for Windows® Media Center is software that runs on a Windows® Media Center computer for controlling lighting, temperatures, security, and audio on a television using a single Media Center remote control.

A Windows® Media Center is an integrated digital entertainment center. It can play, pause and record live TV, play DVDs, store digital music, videos & photos, browse the Internet, check e-mail and run Windows® applications.

HAI's Home Control coordinates security, temperature, lighting, and audio for comfort, convenience and safety. Together, you get incredible performance at a very reasonable price. Registered users receive free updates.

1108

Web-Link II



**ENHANCED
For VISTA!**

HAI's multi-award winning Web-Link II software allows access and control of your HAI system over the Internet. Check and adjust the temperature, lights, security, and audio via a PC, PDA, or web-enabled phone. Web-Link II offers video surveillance and recording over the Internet, wireless access, and the ability to receive e-mail or text messages based on programmed events. Web-Link II is capable of recording video based on alarm or event. The program runs on your home server or PC. Whether you're at the office or on vacation, your home is only a click away! Registered users receive free updates.



HAI Software Combo

1110

Web-Link II and Home Control for Windows® Media Center software bundled together.





Accessories

Want to expand the benefits of your HAI system?

HAI offers a full line of accessories to increase the features and benefits of your HAI home control system.

All HAI accessories are compatible with both the Lumina and the Omni controller families, unless otherwise noted, and can be added at the time of initial installation or later as needs change.

Accessories include mounting equipment, wireless products, sensors, cables, expansion accessories, demo adapter kits, as well as full demo kits.



“HAI’s products are great and they work great with other brands of equipment. Our customers that put in the HAI system won’t ever build a new home without putting in the whole system. Keep up the great work!”

Kaleb DeMille, Manager
A-1 Services, Inc.
St. George, UT



Omni & Lumina Accessories

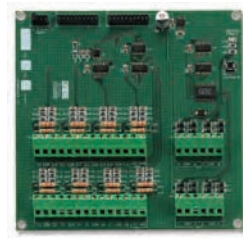
These products will work with all controllers except as noted.



16 Zone Hardwire Expander

10A06-1

Terminals are provided for 16 additional zones that can be programmed for burglary, fire, temperature or auxiliary inputs *(for use with all HAI home controllers except Omni LT)*.



Omni LT Expansion Module

22A00-1

This module expands the Omni LT by adding 16 zones and 8 voltage outputs with overload protection and reset. The module comes with mounting hardware and cable to attach to the Omni LT home control system. The 16 zones can be programmed for burglary, temperature, or auxiliary inputs. The 8 outputs have individual overload protection, with overload indicator and reset button.



Expansion Enclosure

17A00-1

16 Input/16 Output Expansion Board with enclosure, lock set with two keys, accessory kit, instructions. Reduces wiring use in larger installations *(for OmniPro II, Lumina Pro)*.



Mounting Plate for Omni LT

21A07-2

Mounting plate, hardware kit & instructions. Used to mount Omni LT controllers in Leviton and "open house" type structured wiring enclosures.



16 Zone/16 Output Expansion

17A00-9

16 Zone Input/16 Output Expansion Board on a universal mounting plate with accessory kit, instructions for installation in Leviton, UStec, OnQ/Legrand and "open house" type structured wiring enclosures *(for OmniPro II, Lumina Pro)*.



Universal Mounting Plate

20A07-2

Mounting plate, hardware kit & instructions. Used to mount HAI's Omni, Lumina, and Hi-Fi main board assemblies, expanders, and accessories in Leviton, OnQ/Legrand, UStec, and "open house" type structured wiring enclosures.

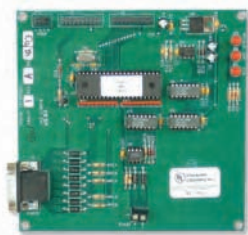
Expansion Board Only

17A00-8

16 Input/16 Output Expansion Board only *(for OmniPro II, Lumina Pro)*.



Omni & Lumina Accessories



RS-232/RS-485 Serial Board 10A17-1

Allows an HAI controller to be connected to a personal computer or other system to exchange data and commands. The controller can be accessed continuously and in real time through the interface without affecting the operation of the controller. Includes RS-232/485 serial board, accessory kit, 20 pin cable, instructions.



4 Relay Module 10A07-1 **8 Relay Module 19A00-1**

Relay Modules are used to convert HAI voltage outputs to Form C relay contacts for switching pumps, motors, commercial lighting, remote control breakers, and sprinkler systems.



Enclosure Lock & 2 Keys 21A06-1

Lock for enclosure, two keys.



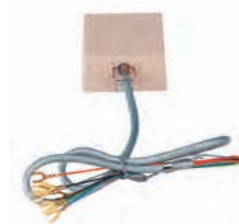
12V 5AH Battery 44A02-1

Replacement Battery for Lumina and Lumina Pro controllers. *(Lumina family only.)*



24V 40VA Transformer 44A03-1

Replacement Transformer for Lumina and Lumina Pro controllers. *(Lumina family only.)*



Telephone Access Kit 44A01-1

RJ31X cord and jack. Allows access and control of all Lumina and Lumina Pro system functions over the phone. It also enables the system to call up to eight different phone numbers for notification of programmed events at home. *(Lumina family only. Omni family has telephone access built-in.)*



Omni & Lumina Accessories



**2nd Quarter
2008!**



Two-Way Cellular Communication Center

70A00-1

Connects with any HAI Omni or Lumina home control system, as well as any security panel.

Checks the status of the home phone line. If the phone line is unavailable, it will emulate the phone line signal, and the panel will dial out using your cellular network to communicate with a central monitoring station, and/or your cellular telephone. Includes backup battery and antenna. Requires GSM SIM card and cellular service. Can be used in applications where land lines are not present.

Want to make an announcement throughout your home?



Two-Way Voice Module

10A11-1

Talk or listen through the telephone interface either locally or remotely. Have your system announce messages based on events in the house. For example, "guest at door" or "back door open". With a Two-Way Voice Module, Hi-Fi by HAI can broadcast your announcements throughout the house. With the OmniPro II and the Lumina Pro, you may leave a voice message for someone. Includes two-way voice board, mounting material, and instructions. Use with the 33A00-4 console, 33A00-20 keypad, 28A00-1 Surface Speaker/Microphone, or 28A00-2 Flush Speaker/Microphone. See special wiring instructions page 86.



PICK UP YOUR HOME PHONE TO ANNOUNCE: "Dinner is Ready!"
or call into your home from your cell phone or office to check up on sick or elderly relatives.



Omni & Lumina Accessories



28A00-1

28A00-2

Surface Speaker Microphone **28A00-1**

A speaker and microphone assembly that allows two-way communication with a central station after an alarm, paging and listening from an on-premises or remote phone, annunciation of alarm and zone by voice, and voice messaging when connected to a Two-Way Voice Module, HAI part number 10A11-1. Includes speaker and microphone, surface mount enclosure, instructions. See special wiring instructions on page 86.

Flush Speaker Microphone **28A00-2**

Includes speaker and microphone, flush mount enclosure, instructions. See special wiring instructions on page 86.

Wireless Receiver for GE InterLogix **42A00-1**

64 Zone wireless receiver, with LED display for GE/ITI/Caddx transmitters.



Two Way X-10 Transceiver Kit **10A09-7**

Two Way X-10 protocol powerline carrier transceiver, 7 foot cable, instructions.

ALC switches are available by special order only.

ALC Interface, 1 branch **25A00-1**

1 branch ALC Hardwire Lighting Control Interface (1-31 lights).

ALC Interface, 4 branch **25A00-2**

4 branch ALC Hardwire Lighting Control Interface (1-124 lights).



Chip Upgrades

EPROM chip upgrade with installation instructions (for the latest version). Works only in compatible controller that does not have flash memory.

Omni LT Chip Upgrade	21A03-1UPG
Omni II Chip Upgrade	20A04-1UPG
Omni IIe Chip Upgrade	20A04-50UPG
OmniPro II Chip Upgrade	20A04-2UPG
Spanish OmniPro II Chip Upgrade	20A04-42UPG
Lumina Chip Upgrade	20A04-21UPG
Lumina Pro Chip Upgrade	20A04-22UPG





64 Zone Wireless Receiver **45A00-1**

433 MHz for use in domestic and international installations. Allows up to 64 unique wireless security transmitters to report information to an HAI controller. The wireless transmitters replace wired door and window sensors, as well as wired, motion and glassbreak detectors.

Now includes Receiver Signal Strength Indicator (RSSI) capability, indicating signal strength of the transmitter as good, fair, or poor. That information is stored in the HAI home control system and can be accessed from any HAI console, Touchscreen or PC Access. This Information is important to an installer to ensure optimum placement and performance of the transmitters and receivers.



Mini Contact **58A00-1**

The 58A00-1 Mini Door/Window Transmitter is a miniature (1.7" H x 1" W x .65" D) supervised wireless transmitter that comes with a case tamper switch, wall tamper switch, and a replaceable Lithium battery. The 58A00-1 is a single zone miniature version of the existing 46A00-1 Three Zone Door/Window Transmitter.

Add these convenient wireless products to your Omni or Lumina family controller for security or automation applications.



For 2008!



Vanishing Contact

57A00-1

Supervised wireless transmitter with beveled edges that vanishes into any décor.



Wireless Recessed

Door Contacts

56A00-1

This recessed supervised wireless transmitter is used for the protection of doors and windows in installations where the contact must be totally hidden. The transmitter is concealed within the door or window frame for virtual transparency. It is supplied with a replaceable lithium battery that lasts for 5 years under normal conditions.

All HAI Wireless Products require the use of an HAI 64 Zone Wireless Receiver (HAI part number 45A00-1).



Door/Window Transmitter 46A00-1

3 Zone Door/Window Transmitter with a mercury tilt switch for garage doors. Includes Door/Window 3 Zone transmitter with tilt switch, magnet, mounting hardware, battery, instructions.



Glass Break 61A00-1

The 61A00-1 Wireless Glassbreak Detector is an omni-directional acoustic sensor and wireless transmitter. It is used for detecting the sound of breaking glass, providing 360° of coverage.



Quad Pet Immune Motion Detector 47A00-1

Quad Pet Immune Motion Detector that greatly reduces false alarms. Includes Quad Pet Immune Motion Detector with wall and ceiling mount hardware, battery, instructions.

Wireless Interface Options



For 2008!



4 Button Wireless Keypad 69A00-1

May be programmed to control any HAI Omni or Lumina home control system feature, such as lights, temperatures, macros, and the security features of an Omni family home control system.



4 Button Keyfob 48A00-1

Can be programmed to control any HAI controller feature, such as lights, temperatures, macros, and security. Includes instructions.



Panic/Alert Pendant 50A00-1

Can trigger outgoing phone calls up to 8 different numbers, an e-mail notification, or video surveillance recording. Includes Panic/Alert pendant with lanyard, battery, and instructions.

All HAI Wireless Products require the use of an HAI 64 Zone Wireless Receiver (HAI part number 45A00-1).



Serial PC Cable

21A05-2

7 foot cable, modular to DB-9F - connects controller serial ports to computer RS-232 serial port for use with PC Access, Web-Link II and Home Control for Windows® Media Center.

UPB™ Powerline Interface Module to Computer Cable

36A05-2

7 foot cable, modular to DB-9F - connects HAI UPB™ Power Interface Module to computer RS-232 serial port for use with UPStart software. UPStart may be downloaded for free from HAI's website.

Serial Connectivity Cable

36A05-4

7 foot cable, modular to DB-9M - connects controller to serial ports for Russound, NuVo, RadioRA, Centralite, Jandy.



OmniTouch Loader Kit

32A09-1

Cable and software to load new pages and firmware updates to OmniTouch Touchscreens. *(For use only with 32A00-1, 32A00-5, 32A00-7, and 32A00-8.)*



Hi-Fi by HAI Retractable Cable

62A13-1

3.5 mm male to 2 RCA male patch cable. Extends to 4 feet. Use to connect TVs, CD players, home theater and stereo components to Hi-Fi's RIM.



HAI Lighting Control (HLC) Expansion Kit for Omni LT

36A10-1

Serial interface, cable and UPB™ Powerline Interface Module to add HLC to Omni LT.



Hi-Fi by HAI Retractable Cable

62A14-1

3.5 mm male to 3.5 mm male stereo patch cable. Extends to 4 feet. Use to connect MP3 players, iPods™, computers with headphone and/or audio outputs to Hi-Fi's RIM.



Demo Adapter Kits & Demo Cases

Whether you're simply adding the Demo Adapter Kit to a standard HAI home control system, or traveling with the rugged Demo Case, it's easy to show how HAI products function! Let your potential customers see and touch the difference that an HAI home control system can make in their lives.



OmniPro II Demo with OmniTouch and HAI Lighting Control 18A00-13

Fully assembled & operational OmniPro II demo system, including controller, RC-80B Omnistat thermostat, LCD console with built-in speaker, OmniTouch 5.7 Touchscreen, HAI Lighting Control: House Status Switch, Scene Switch, and Dimmer, UPB™ Powerline Interface Module and cable, Voice Module. It is packaged in a super duty black travel case. Demo programs included.



Lumina Demo Case 18A00-14

Fully assembled and operational Lumina demo system, including Lumina controller, RC-80B Omnistat thermostat, LCD keypad with built-in speaker, OmniTouch 5.7 Touchscreen, HAI Lighting Control: House Status Switch, Scene Switch, Mode Switch, and Dimmer, UPB™ Powerline Interface Module and Phase Coupler. It is packaged in a super duty black travel case. Demo programs included.

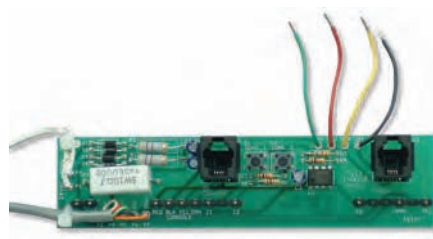
Want to Build Your Own Demo Case?

Instantly set up a system for demonstrations, home shows, and evaluations using a standard HAI home controller. Use your demo system as a quick trainer for technicians, sales people, and customer service representatives. Demo Adapter Kits are easily and instantly installed and removed with no soldering, wiring, or fuss.



Demo Adapter Kit 18A00-5

Demo adapter board, instructions (for Omni IIe, OmniPro II, Lumina, Lumina Pro).



Omni LT Demo Adapter Kit 27A00-2

Demo adapter board, instructions (for Omni LT).

HAI takes great pride in the compatibility of our products.



HAI has developed, and continues to develop, relationships with other manufacturers in the industry to integrate our products with theirs. Doing so allows flexibility for the homeowner to add and upgrade products as desired.

Supported Protocols

Zigbee, Z-Wave, UPB, X-10, RS-232, RS-485, TCP/IP, ASCII

Please visit our website at <http://www.homeauto.com/partners> for updated and detailed information on HAI Connectivity Partners, including specific models.

Trademarks and/or service marks are the property of their respective owners.

CONNECTIVITY PARTNER CATEGORIES

Audio/Video	AMX Crestron Elan InfuseboX Mobile Technology Philips
Central Vacuum	MD Manufacturing Central Vacuums
Handheld Remote	Philips
Irrigation Systems	WGL & Associates
Lighting	CentraLite Electronic Design Technologies (EDT) Leviton Lightolier Controls LiteTouch Lutron PCS Smarthome Mfg
Remote Access	Connected Hearth
Security (Lumina Only)	DSC
Software	Architechtronics Autonomic Controls HomeLogic Omnipotence Software
Structured Wiring	Future Smart Home Director Leviton OnQ/Legrand UStec
Touchscreens	Convergent Living Hometouch Pelham Sloane Samsung
Whole Home Audio	NuVo Proficient Audio Systems Russound SpeakerCraft Xantech
Window Coverings	SOMFY



HAI Dealer Program

Benefits of Being a Listed Dealer

There are many reasons to become an HAI listed dealer. Some of the benefits include:

- **Homeowners Can Find You.** Consumers considering home automation visit the HAI website and find their dealer through HAI's dealer lookup pages.
- **Sales Leads.** HAI provides listed dealers with sales leads generated through HAI's marketing and sales efforts.
- **Broader Access to Knowledge Base.** HAI provides listed dealers with access to more Knowledge Base articles than the general public.
- **Marketing Assistance.** Download and use HAI's logos and high-quality images of HAI's products in your marketing and sales efforts. Listed Dealers may download editable versions of HAI's brochures to customize their marketing message.
- **Early Access to Information.** Be first to get information about HAI's products when they are released. Receive monthly Dealer Newsletters.
- **Model Homes.** Listed dealers can get their Model Homes placed on HAI's website for free.

How Do I Become an HAI Listed Dealer?

In order to become an HAI dealer listed on HAI's website, you must complete the following requirements:

- Attend at least one HAI Training class.
- Complete the installation of at least three HAI systems.
- Agree to strictly adhere to all technical standards as instructed in the HAI Training class.

- Commit to providing professional excellence and customer service in the installation of all HAI products.

After completing these requirements, fill out an online application on the Guest Dealer Support Website. Your application will be reviewed by HAI's sales staff, including the Sales Territory Manager responsible for your area. When you are approved, you will then start enjoying the benefits of being a Listed Dealer.

HAI Five Star Dealer



The HAI Five Star Dealer program acknowledges HAI's outstanding dealers each year for their loyalty to HAI's products, expertise in their field, the number of installations of HAI systems done in the previous calendar year, and marketing savvy.

HAI's Five Star Dealers receive an enhanced dealer listing on the HAI website with the HAI Five Star Dealer logo.

Each Five Star dealer receives the HAI Five Star Dealer logo to use in their marketing. Moreover, these dealers receive a wall plaque showing their Five-Star Dealer status to the customers that visit their office.

Every dealer that wants to be considered for Five Star status submits an annual application, including those that were previously awarded this designation. You must be an HAI Listed Dealer to be eligible for Five Star Dealer consideration.

Dealer and Distributor Websites

HAI maintains separate Dealer Support and Distributor Support websites that share common offerings. Login to these areas requires a valid user ID and password.

Dealers that have not applied or have not met the requirements to be an HAI Listed Dealer can login into the Dealer Support website as a Guest. Guest Dealers have limited access on the Dealer Support website.

Downloads



You may download all product materials, including owners manuals, installation manuals (not available on the HAI public website), Product Technical Sheets, and Quick Start Guides. Also available for download are all brochures, Integration Notes

for Connectivity Partner products, Manufacturer's Suggested Retail Price, Minimum Advertised Price (distributor support only), and Return Authorization forms.

Marketing Materials

HAI offers printed literature that can be ordered for FREE to use as sales material to homeowners. The following literature pieces are currently available:



- HAI Product Guide
- Builder Brochure
- Omni Family Brochure
- Lumina Family Brochure
- HAI Home Control for Windows® Media Center Brochure
- Hi-Fi by HAI Brochure
- Interface Options Brochure
- HAI Lighting Control Brochure
- What is Home Automation Sheet



Listed Dealers and Distributors can download editable copies of the brochures so that they can place their contact information on them and print them locally.

Listed Dealers and Distributors have access to high-resolution versions of HAI's logos and product photos to use with their marketing, including on their website.

HAI also offers for FREE the Automation Simplified® Training & Marketing Materials CD. It has all of HAI's marketing materials, Product Technical Sheets, manuals, Quick Start Guides, product demos, Application Directory, PowerPoint training presentations, and videos.

HAI provides flash commercials and demonstrations that may be downloaded and used on Dealer or Distributor websites, in sales presentations, or product demonstrations.

Moreover, HAI has created Product Technical Sheets for its products and an overview document called "Learning about Home Automation" that may be downloaded for free and printed by any Dealer or Distributor.

HAI has several sales videos available for viewing or for downloading to be used by a Dealer or Distributor.



Dealer & Distributor Support



Dealers can order the **Model Home Support Kit** (HAI part number SA-23) through regular distribution channels. It includes discreet wall displays to articulate the benefits of an HAI automated home. It includes a supply of HAI "What is Home Automation Sheets".



Dealers can order **HAI Yard Signs** (HAI part number SA-30) through the HAI Online Store (accessible through the Dealer Support Website only). The HAI

Online Store carries repair and replacement parts, as well as HAI firmware upgrades.

The HAI yard signs are an excellent addition to an open house, a model home, or a showroom. The SA-30 package includes 2 signs with posts.

Updates from HAI

Technical Advisories are important alerts regarding installation issues, and Technical Bulletins are important alerts regarding product issues.

Dealers and Distributors each receive monthly newsletters, which bundle all of the month's notable information, including upcoming trade shows, new product releases, training dates, technical support, and press releases.

Knowledge Base

HAI's Knowledge Base (<http://kb.homeauto.com>) is composed of documents that have been formulated

by HAI's Technical Support team. The Knowledge Base is available for 24/7 support.

HAI Listed Dealers and Distributors have a link on their respective Support Websites that provide greater access than the public receives in HAI's Knowledge Base.

Training

HAI provides online training classes that may be viewed at a convenient time by a Dealer or Distributor. HAI offers Dealer and Distributor only Webinars.

Sales Leads

HAI provides Listed Dealers and Distributors with sales leads in their area.

Programming Interfaces for HAI Products

Dealers and Distributors can download HAI's Omni-Link Serial Protocol or Pro-Link Protocol documents to learn how to create an application that communicates with an HAI controller via a serial port.

Omni-Link II protocol supports both serial and Ethernet applications utilizing a TCP/IP protocol.

For applications that communicate with an Ethernet port, Dealers or Distributors may download an API Kit.

The Application Directory is a valuable manual that contains a host of applications and programs for PC Access. It also contains helpful information on troubleshooting and programming conventions.

HAI Classes are Intended for Professional Installing Dealers & Building Contractors.

HAI offers free classroom training, Factory Training, and training videos to train installers how to sell, use, and install HAI products.

HAI has training partners that offer a variety of classes on the technology needed to automate your home or business.



Free Classroom Training

HAI offers FREE classroom training that may be directly sponsored by HAI or by an HAI Wholesale Distribution Partner. Classes

sponsored by HAI Wholesale Distribution Partners are called VIP Workshops.

All HAI classes have the benefit of an HAI employee teaching the class and answering your questions.

The following classes are offered for free:

- Automation Simplified
- Designing a Home Automation System
- HAI Application Programming
- HAI Installation Training
- HAI New Products
- Hi-Fi by HAI
- Increase Your Profits with Home Automation
- Internet Home Control Made Easy
- Introduction to Home Automation
- Selling Home Automation
- Whole House Lighting Control and Home Automation



Factory Training

Factory Training is a two-day event at HAI's headquarters, located in New Orleans, that has detailed installation and system

programming instruction. Students work hands-on with a home control system and computer to learn how to install and set up an HAI system. There is a fee to attend this class. For more information, e-mail training@homeauto.com

Online Training

Training videos are available to Dealers and Distributors on the Dealer Support and Distributor Support websites.

Additionally, HAI regularly offers Webinars that provide the same training that is available in its free classroom training. To view upcoming Webinars or to view previously recorded Webinars please visit:

<http://www.homeauto.com/webinar>



Some classes are eligible for credits, and many classes carry state approvals.

For more information on HAI's extensive training efforts, please visit

<http://www.homeauto.com/training>



Attend an HAI training session and receive a special rebate on the following Starter Kits to get you started in the home automation industry.

Each Starter Kit includes everything that you will need to become familiar with HAI systems, including Dealer Software.

STARTER KITS

All Starter Kits come with 1105W Dealer Software, surface mount console, RJ31X cord and jack, serial cable, lock set with two keys, and manuals in addition to the items listed in their descriptions.



OmniPro II Starter Kit

Promo 16

Includes OmniPro II controller with enclosure, RC-80B Omnistat thermostat, indoor/outdoor temperature sensor, UPB™ Powerline Interface Module and cable, flush mount kit.



Omni Ite Starter Kit

Promo 14e

Includes Omni Ite controller with enclosure, RC-80B Omnistat thermostat, indoor/outdoor temperature sensor, UPB™ Powerline Interface Module and cable, temperature sensor, flush mount kit.



Omni LT Starter Kit

Promo 11

Includes Omni LT controller with enclosure, UPB™ Powerline Interface Module and cable, sample home control programs.

“HAI works extremely well from a Dealer standpoint. More importantly, it is also very easy to use from a homeowner standpoint. The keypads/touchscreens are simplistic in design. There is literally no learning curve for the telephone control and the software is user friendly.”

John Evans, President
Aegis Systems, Inc.
Dallas, TX



Sell more homes and set yourself apart from the competition by offering home technology from the premier manufacturer of home control systems.



“With the HAI systems in place... homes sell 50% faster and at prices 3-5% higher than before.”

K. Eckhaus, Builder
Las Vegas, NV



- Model Home Product Rebates
- Free Product Literature
- Model Home Support Kit
- CSI Format Architectural Specifications
- CEA TechHome Rating System
- Yard Signs
- Customizable Volume Packages Available
- International Network of Trained Dealers/Installers
- Training Available for Builder's Preferred Installers

Contact HAI or one of our Distribution Partners or Dealers for information regarding our Builder Partner Program to start selling more homes faster today!



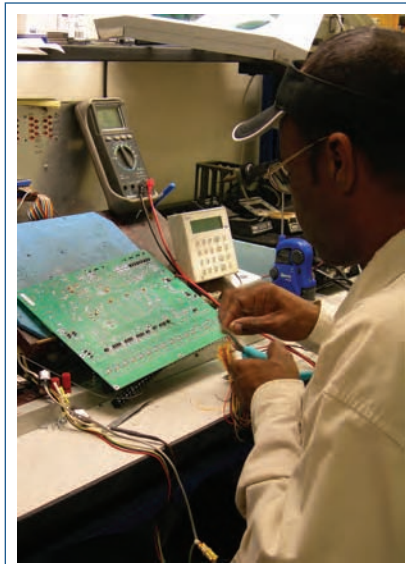
Technical Support & Service

HAI stands behind our products with industry leading support and customer service.

For professional installing dealers:

- Territory Sales Managers
- 800 Technical Support (800-229-7256 Option 1 or x400)
- Online Knowledge Base (<http://kb.homeauto.com>)
- Parts & Repair Department
- Warranties on all HAI products

See HAI's website for additional support and service information.



Reggie Smith, Test & Repair Technician, performing quality assurance testing.



Ernie Sieber, Technical Support Supervisor, taking a service call.



Technical Support
(800) 229-7256 ext. 400
support@homeauto.com

Product Support 24/7: Questions about a product or program? Get help anytime using HAI's Knowledge Base at <http://kb.homeauto.com>

WIRING REQUIREMENTS AND DISTANCES

Product Name	Part Number	Wire Type	Conductors	Max. Length	Twist	Shield
Consoles/Keypads	33A00-ALL *	22 AWG	4	1000**	No	No
OmniTouch 5.7	53A00-1	22 (2) AWG	4 (2)	724***	No	No
OmniTouch 5.7 with Touchscreen Hub	53A00-1	CAT-5 (patch)	8	800	n/a	n/a
Hi-Fi RIM	62A04-1	CAT-5 (patch)	8	500	n/a	n/a
Hi-Fi VSC	62A03-1	CAT-5 (patch)	8	250	n/a	n/a
Hi-Fi Speaker	n/a	16 AWG	4 (6)	TBD	n/a	n/a
Expansion	17A00-ALL	22 AWG	2	1000**	No	No
GE Wireless Receiver	42A00-1	22 AWG	4	1000**	No	No
HAI Wireless Receiver	45A00-1	22 AWG	4	1000**	No	No
Omnistat	RC-ALL except Omnistat-Z	22 AWG	4	10,000	No	No
ALC Interface	25A00-ALL	20 AWG	4	500****	Yes	No
Speaker	33A00-20, 33A00-4	18 AWG	2	50*****	Yes	No
Microphone	33A00-20, 33A00-4	24 AWG	2	100	Yes	Yes
Extended Range Indoor/Outdoor Temperature Sensor	31A00-ALL	22 AWG	4	n/a	No	No
Remote Indoor Temperature Sensor	23A00-ALL	22 (5) AWG	2	250*****	Yes	Yes
PESM	1101A	22 AWG	4	n/a	No	No
Water Temperature Sensor	14A00-8	22 AWG	3	n/a	No	No

* 33A00-4 and 33A00-20 requires additional wiring for speaker/microphone

** 1000 feet limit for entire AB Bus combined

*** Exact wire determined by distance and wire type - please refer to page 86

**** Wire limit per branch

***** For distance up to 100 feet, use 16 AWG

***** Size of wire requirements based on insulation and distance



Wiring Requirements

Use this chart when directly connecting an OmniTouch 5.7 to an HAI home control system.

MAXIMUM CABLE LENGTH BASED ON WIRE GAUGE/TYPE		
Wire Gauge	Num. of positive & ground conductors	Maximum Cable Length (feet)
24	1	113
24	2	227
24	3	340
22	1	180
22	2	360
20	1	287
18	1	456
16	1	724

Chart uses solid wiring. If using stranded wire, deduct distance by 5%.

Use this chart when connecting an OmniTouch 5.7 to an HAI home control system using a Touchscreen Hub.

Wire Gauge	Maximum Cable Length (feet)
24	800

Wiring Instructions For Two-Way Voice Module And Devices That Use It

Do not mount speakers, microphones, 28A00 modules, or 33A00-4 consoles near any device that may produce noise (fans, air conditioning units, audio speakers, etc.). Microphones should be connected with 24 AWG or larger, shielded twisted pair wire. Wire length should not exceed 100 feet. Connect the cable shields and negative wires together at the Model 10A11-1 terminal block only. Do not connect the shield on the microphone end. Additional microphones can be connected to each input in parallel. Speakers should be connected with 18 AWG or larger, twisted pair wire. For wire runs that exceed 50 feet, use 16 AWG wire or larger. Wire length should not exceed 100 feet. A power amplifier may be connected to the line-level audio output using a 3.5mm patch cable. The page output provides a contact closure whenever the Model 10A11-1 generates audio.

CONTROLLER

In enclosure
On mounting plate
Spanish in enclosure
Spanish on mounting
plate

20A00-2
20A00-8
20A00-42

20A00-44

CONTROLLER

In enclosure
On mounting plate

20A00-50
20A00-52



AUDIO

Omni Console w/ Spkr/Mic **33A00-4**
Surface Speaker/Mic **28A00-1**
Flush Speaker/Mic **28A00-2**
Two-Way Voice Module **10A11-1**

SERIAL PORTS

HAI Lighting Control **pg 29**
Serial to PC Cable **21A05-2**
Serial Connectivity Cable **36A05-4**
HAI Connectivity Partner
Audio System (Pro II only) **62A00-1 or 62A00-2**
Hi-Fi by HAI

EXPANSION

Zone Expander **10A06-1**
Serial Board **10A17-1**
ALC Lighting **pg 72**

ETHERNET PORT

See HAI Software Options **pg 61**
2 way X-10 Interface Kit **10A09-7**

12V BATTERY

EARTH GROUND

TRANSFORMER

24V, 40 VA

USER INTERFACE

OmniTouch Touchscreens & Consoles
pg 54

EXPANSION

HAI Wireless Receiver **45A00-1**
Wireless Receiver **42A00-1**
Expansion Enclosure (Pro II only)

SECURITY & ENERGY MANAGEMENT

Temperature Sensor **31A00-7**
Temperature/Humidity Sensor **31A00-8**
Standard Security/Fire/Environmental Sensors

TELEPHONE INTERFACE

PC Access **pg 66**
Telephone

COMFORT & CONVENIENCE

HAI Omnistat thermostats **pg 37**



AUDIO

Omni Console w/ Speaker/Mic	33A00-4
Surface Speaker/Microphone	28A00-1
Flush Speaker/Microphone	28A00-2
Two-Way Voice Module	10A11-1

EXPANSION

Omni LT Expander	22A00-1
------------------	----------------

CONNECTIVITY

Serial Board	10A17-1
ALC Lighting	Pg 72



SERIAL PORT

HAI Lighting Control	pg 29
HAI Web-Link II	
Software	1108
Home Control	
for Media Center	1109
Serial Cable	21A05-2
Hi-Fi by HAI	62A00-1 or
	62A00-2
PC Access	pg 66



TELEPHONE INTERFACE

PC Access	pg 66
Telephones	
Computer Modems	

2 way X-10 Interface Kit **10A09-7**

EARTH GROUND

TRANSFORMER

16.5V, 40 VA
(12V Battery)

EXPANSION

Wireless Receiver	45A00-1
-------------------	----------------

USER INTERFACE

OmniTouch Touchscreens
& Consoles

pg 53



COMFORT & CONVENIENCE

HAI Omnistat Thermostats (2 max)
pg 37



SECURITY & ENERGY MANAGEMENT

Temperature Sensor	31A00-7
Temperature/Humidity Sensor	31A00-8
Standard Security/Fire/Environmental Sensors	

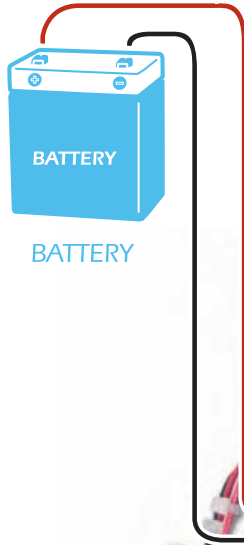
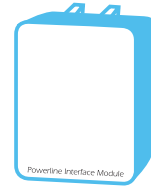


CONTROLLER

Lumina Pro
Lumina

44A00-2
44A00-1

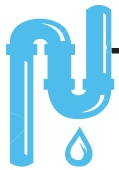
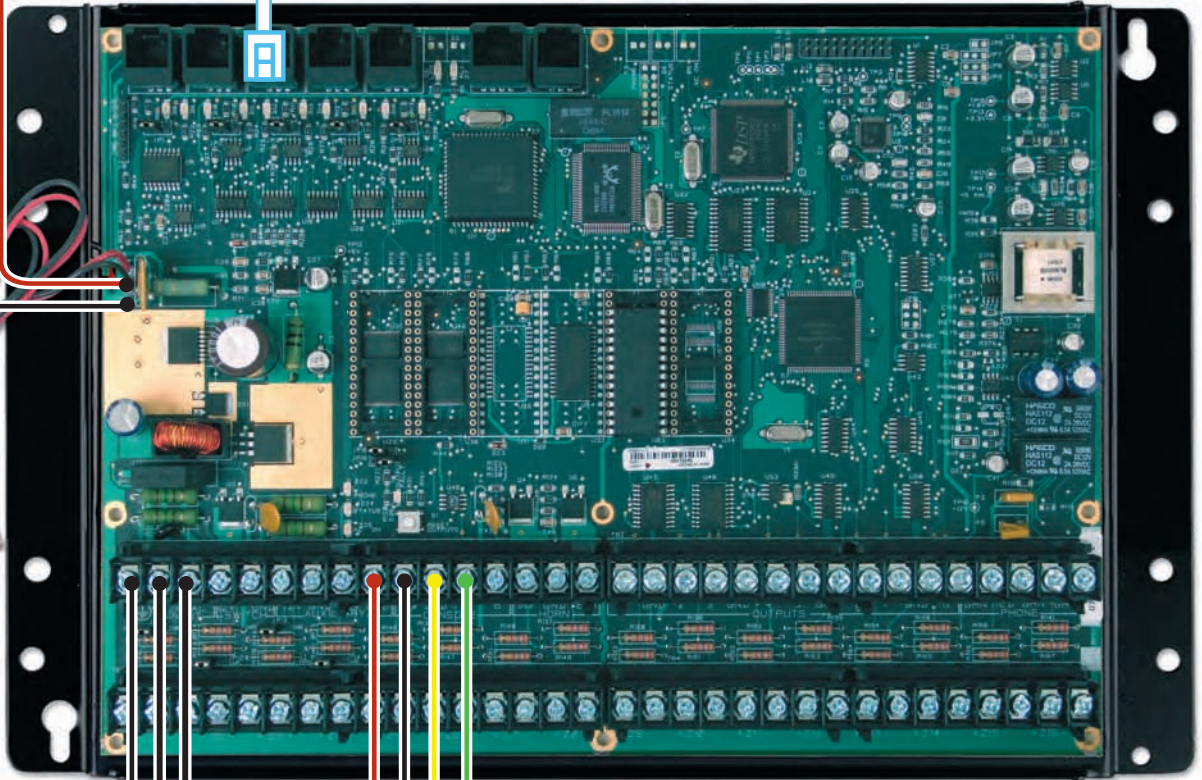
POWERLINE
INTERFACE
MODULE



BATTERY

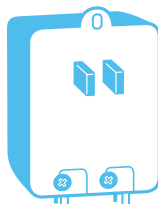
BATTERY

6 CONDUCTOR

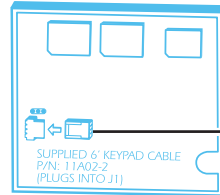


COLD WATER
PIPE (METAL) OR
GROUND ROD

POWER
TRANSFORMER



KEYPAD PC BOARD



SUPPLIED 6' KEYPAD CABLE
P/N: 11A02-2
(PLUGS INTO J1)

LUMINA KEYPAD

RED
BLACK
YELLOW (or WHITE)
GREEN

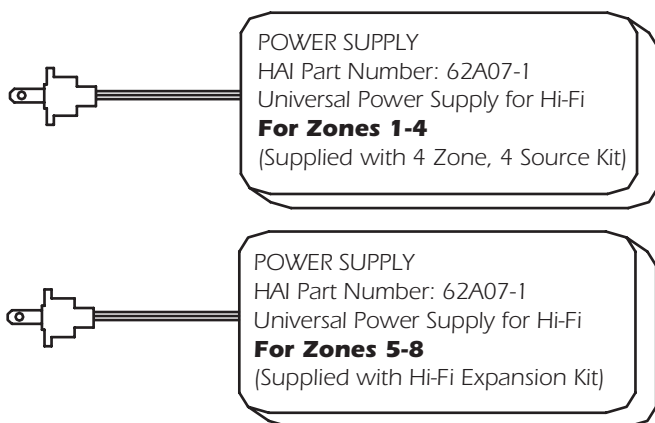
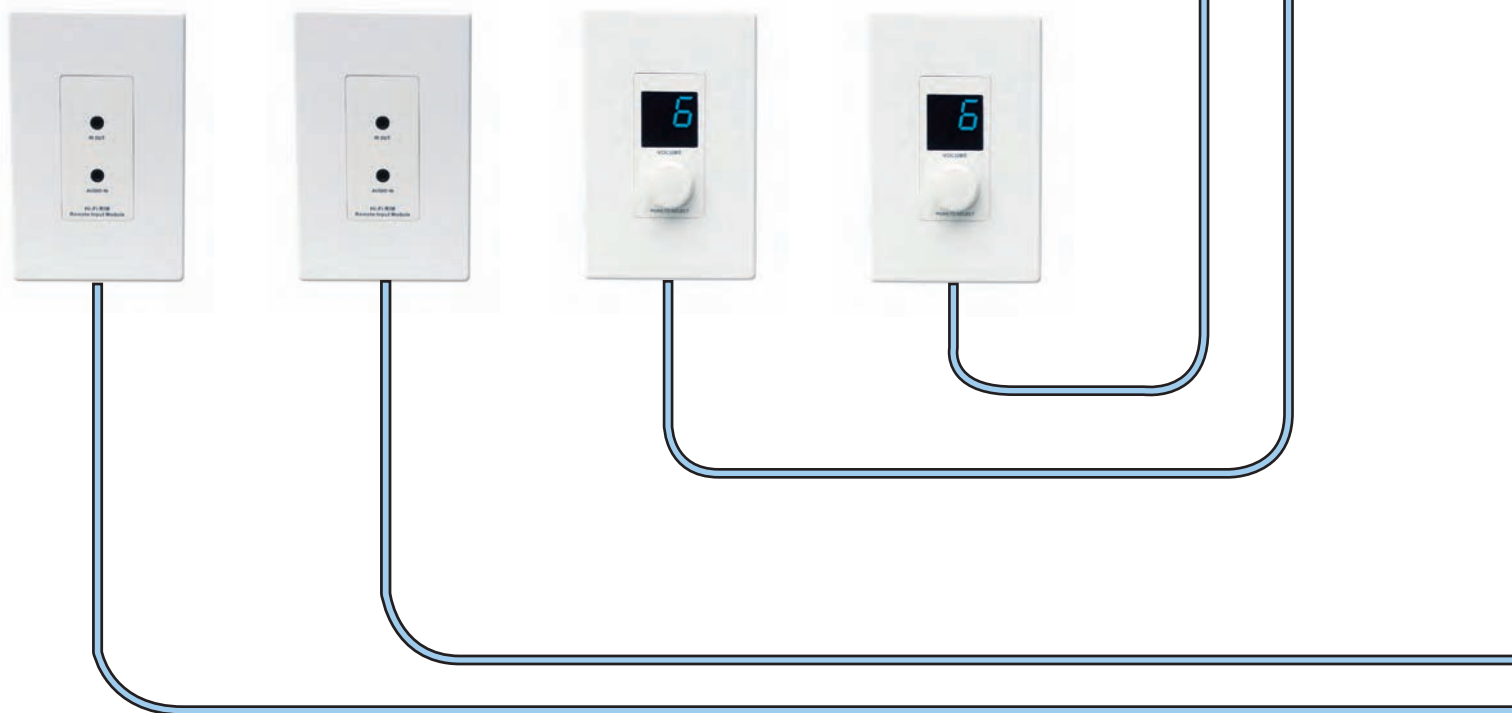


RIM

- **Remote Input Module** - allows any source from anywhere in the house to be listened to in any or all zones. It also has an IR emitter port for routed IR commands from the VSC.
- Use Cat 5 cable from the RIM to Remote Audio In on the Hi-Fi.
- Maximum of six RIMs.

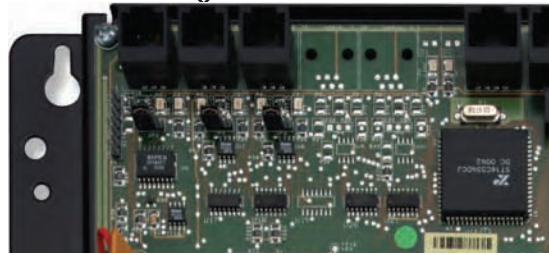
VSC

- **Volume-Source Control** - control volume and select source, in addition to adjusting bass, treble, balance, and source gain. It also has an infrared receiver.
- Use Cat 5 cable from the VSC to Zone Control In on the Hi-Fi.
- Maximum of eight VSCs.



One 62A07-1 Power Supply is used to power Zones 1-4. A second 62A07-1 Power Supply is used to power Zones 5-8.

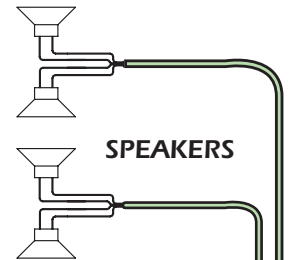
Connect to HAI controller to select zone and source, and control volume and power from an OmniTouch Touchscreen or via controller program.



HAI CONTROLLER (OPTIONAL)

TO SERIAL PORT ON
HAI CONTROLLER

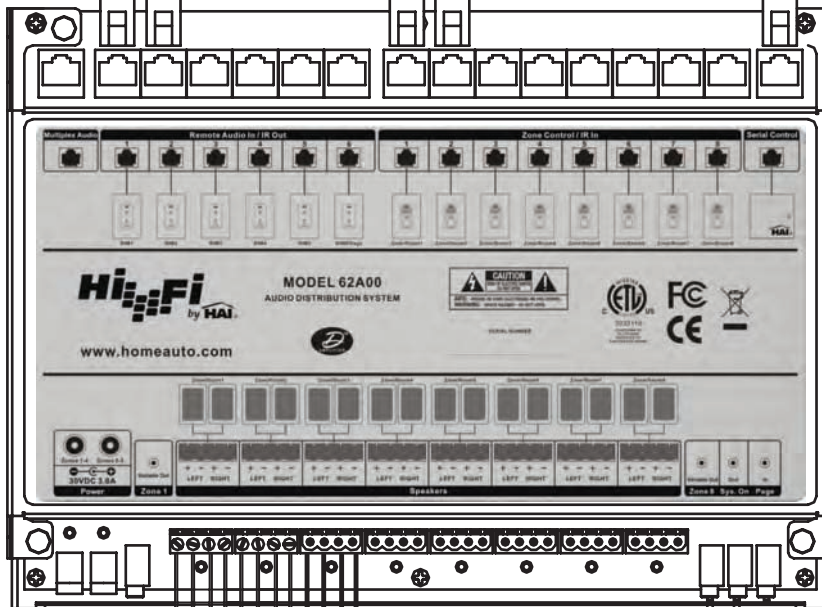
Hi-Fi has 2 variable outputs (Zone 1 and Zone 8) that allow you to deliver more power to the zone speakers through an optional power amplifier.



SPEAKERS



POWER AMPLIFIER (OPTIONAL)



Use 16 gauge speaker wire (4 conductor stranded is suggested for neat installation)



SPEAKERS



SPEAKERS

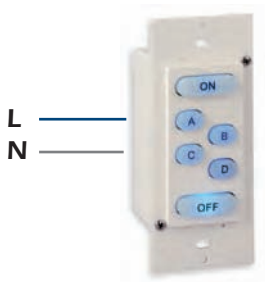


SPEAKERS



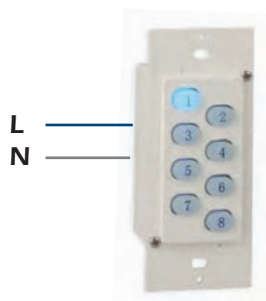
SCENE SWITCH

38A00-1



HOUSE STATUS SWITCH

38A00-2



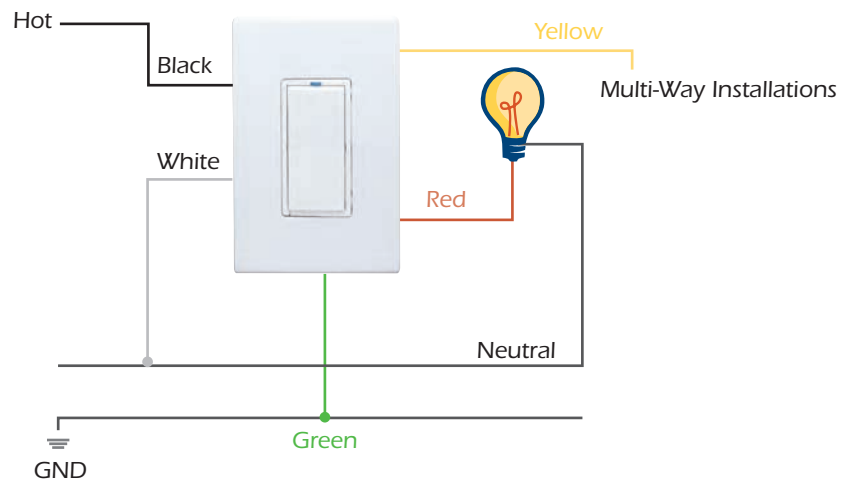
LUMINA MODE SWITCH

38A00-3



Dimmers & Relay Switch

35A00-1; 35A00-3; 55A00-1;
55A00-2; 55A00-3; 40A00-1



Index By Part Number



Part #	Description	Pg #	Part #	Description	Pg #
106080	Touchscreen Hub		20A04-1UPG	Omni II Chip Upgrade	72
	Replacement Power Supply.....	59	20A04-2UPG	OmniPro II Chip Upgrade	72
10A06-1	16 Zone Hardwire Expander.....	69	20A04-21UPG	Lumina Chip Upgrade	72
10A07-1	4 Relay Module.....	70	20A04-22UPG	Lumina Pro Chip Upgrade	72
10A09-7	Two way X-10 Transceiver Kit	72	20A04-42UPG	Spanish OmniPro II Chip Upgrade	72
10A11-1	Two-Way Voice Module	71	20A04-50UPG	Omni IIe Chip Upgrade	72
10A17-1	RS-232/RS-485 Serial Board	70	20A07-2	Universal Mounting Plate	49,69
1101A	PESM.....	43	21A00-1	Omni LT Controller.....	21
1105W	Dealer PC Access Software	66	21A00-11	Omni LT for Structured	
1105WSP	Spanish Dealer PC Access Software.....	66		Wiring Enclosures	21
1106W	End User PC Access Software	66	21A00-2	Omni LT Board Only	21
1108	HAI Web-Link II.....	67	21A03-1UPG	Omni LT Upgrade Chip	72
1109	HAI Home Control for		21A05-2	Serial PC Cable	75
	Windows® Media Centers	67	21A06-1	Enclosure Lock and 2 Keys	70
1110	HAI Software Combo	67	21A07-2	Mounting Plate for Omni LT	69
1111	Lumina PC Access	66	22A00-1	Omni LT Expansion Module	69
1120	Snap-Link.....	62	23A00-1	Surface Mount Remote Indoor	
1120M	Snap-Link Mobile.....	65		Temp Sensor	42
1125	Pronto Link for Philips.....	65	23A00-2	Flush Mount Remote Indoor	
14A00-8	Water Temperature Sensor	43		Temp Sensor	42
17A00-1	Expansion Enclosure	69	25A00-1	ALC Interface, 1 branch	72
17A00-8	Expansion Board Only	69	25A00-2	ALC Interface, 4 branch	72
17A00-9	16 Zone/16 Output Expansion	69	27A00-2	Omni LT Demo Adapter Kit.....	76
18A00-13	OmniPro II Demo System with		28A00-1	Surface Speaker Microphone.....	72
	OmniTouch and HLC	76	28A00-2	Flush Speaker Microphone.....	72
18A00-14	Lumina Demo Case	76	29A00-1	Thermostat Isolation Module.....	42
18A00-5	Demo Adapter Kit.....	76	30A00-1	Thermostat Power Supply Module.....	42
19A00-1	8 Relay Module.....	70	31A00-7	Extended Range Indoor/Outdoor	
20A00-2	OmniPro II Controller	19		Temperature Sensor	43
20A00-21	OmniPro II Board Only	19	31A00-8	Extended Range Indoor/Outdoor	
20A00-42	OmniPro II Controller [Spanish].....	28		Temperature & Humidity Sensor.....	43
20A00-44	OmniPro II Controller for Structured		32A09-1	OmniTouch Loader Kit	75
	Wiring Enclosures (Spanish)	28	32A30-1	Touchscreen Hub w/	
20A00-5	OmniPro II Commercial Controller	19		Video, Enclosure.....	59
20A00-50	Omni IIe Controller	20	32A30-2	Touchscreen Hub w/ Video, for	
20A00-52	Omni IIe Controller for			Structured Wiring Enclosures.....	59
	Structured Wiring Enclosures.....	20	32A30-3	Touchscreen Hub,	
20A00-53	Omni IIe Board Only	20		No video, Enclosure.....	59
20A00-8	OmniPro II Controller for		32A30-4	Touchscreen Hub, No Video, for	
	Structured Wiring Enclosures.....	19		Structured Wiring Enclosures.....	59



Index by Part Number

Part #	Description	Pg #	Part #	Description	Pg #
32A31-2	Touchscreen Hub Board Only	59	47A00-1	Quad Pet Immune Motion Detector	74
32A32-1	Video Encoder.....	59	48A00-1	4 Button Keyfob.....	74
33A00-1	Omni Console	60	50A00-1	Panic/Alert Pendant	74
33A00-19	Lumina Keypad.....	60	53A00-1	OmniTouch 5.7	56
33A00-20	Lumina Keypad with Built-in		53A00-2	OmniTouch 5.7e.....	56
	Speaker/Microphone	60	53A00-3	OmniTouch 5.7 Spanish.....	56
33A00-3	Flush Mount Kit	60	53A05-color	OmniTouch 5.7 Color Change Kit.....	56
33A00-4	Omni Console with built in		54A00-1	HAI Access Control Keypad.....	60
	Speaker/Microphone	60	55A00-1 color	HAI UPB™ 1000W	
35A00-1	600W UPB™ Dimmer Switch	31		Dimmer Switch	31
35A00-3	600W UPB™ Non-Dimming Switch.....	31	55A00-2color	HAI UPB™ 1500W	
35A14-color	Switch Color Change Kit	34		Dimmer Switch	31
36A00-1	UPB™ Powerline Interface		55A00-3color	HAI UPB™ 2400W	
	Module and Cable	34		Dimmer Switch	31
36A05-2	UPB™ Powerline Interface Module		55A02-1	HLC 500W Dimmer	
	to computer cable	75		Wall Plate, White.....	31
36A05-4	Serial Connectivity Cable	75	55A02-2	HLC 1500W Dimmer	
36A10-1	HLC Expansion Kit for Omni LT.....	75		Wall Plate, Ivory	31
37A00-1	Auxiliary Switch.....	32	55A03-1	HLC 2400W Dimmer	
38A00-1	Scene Switch - 6 button	33		Wall Plate - White.....	31
38A00-2	House Status Switch - 8 button	33	55A03-2	HLC 2400W	
38A00-3	Lumina Mode Switch	26, 60		Dimmer Wall Plate - Ivory	31
38A04-color	Scene Switch & Lumina Mode		56A00-1	Wireless Recessed Door Contact.....	73
	Switch Color Change Kit	34	57A00-1	Vanishing Mini Contact.....	73
38A05-color	House Status Switch Color		58A00-1	Mini Contact.....	73
	Change Kit	34	59A00-1	UPB™ Lamp Module.....	32
38A06-2	Custom Legend Kit for Scene or		60A00-1	UPB™ Appliance Module	32
	House Status Switch.....	33	61A00-1	Glass Break Detector	74
38A14-1	Scene Switch Remote.....	33	62A00-1	Hi-Fi by HAI 4 Zone, 4 Source Kit	
38A15-color	Table Top Scene Switch Cradle	32		in Enclosure.....	47
39A00-1	Phase Coupler	34	62A00-2	Hi-Fi by HAI 4 Zone, 4 Source Kit for	
40A00-1	15A Relay Switch	32		Structured Wiring Enclosures.....	47
42A00-1	Wireless Receiver for GE InterLogix.....	72	62A01-1	Hi-Fi by HAI 4 Zone, 4 Source	
44A00-1	Lumina	26		Main Assembly.....	48
44A00-2	Lumina Pro	26	62A02-1	Zone Amplifier Card (ZAC).....	48
44A01-1	Telephone Access Kit.....	60, 70	62A03-1	Volume-Source Control (VSC)	48
44A02-1	12V 5AH Battery.....	70	62A04-1	Remote Input Module (RIM)	48
44A03-1	24V 40VA Transformer.....	70	62A05-1	Remote Control	47
45A00-1	64 Zone Wireless Receiver.....	73	62A06-1	Programmable Remote Control	47
46A00-1	Door/Window Transmitter	74	62A07-1	Power Supply	49

Index by Part Number



Part #	Description	Pg #	Part #	Description	Pg #
62A08-1	IR Flasher	49		with Snap-Link	20
62A09-1	Vented Enclosure.....	49	Promo14e	Omni Ile Starter Kit.....	20, 82
62A10-color	Hi-Fi by HAI RIM Color Change Kit	49	Promo15	OmniPro II Kit with Flush Console.....	19
62A11-color	Hi-Fi by HAI VSC Color Change Kit.....	49	Promo15S	OmniPro II for Structured Wiring Kit with Flush Console.....	19
62A12-1	Hi-Fi by HAI Expansion Kit (to 8 zone 6 sources)	47	Promo16	OmniPro II Starter Kit.....	19, 52
62A13-1	HiFi by HAI Retractable Cable	48, 75	RC-80B	Omnistat, Single Stage Heat/Cool	41
62A14-1	HiFi by HAI Retractable Cable	48, 75	RC-80BZ	Omnistat-Z, Single Stage Heat/Cool.....	41
65A09-1	Omnistat2 Ethernet Module.....	40	RC-90B	Omnistat, Single Stage Heat/Cool for Zoned Systems	41
65A10-1	Omnistat2 Zigbee® Module.....	40	RC-90BZ	Omnistat-Z, Single Stage Heat/Cool for Zoned Systems	41
65A12-1	Omnistat2 Remote Sensor Module	40	RC-100B	Omnistat, Heat Pump	41
65A13-1	Omnistat2 Zigbee® Transceiver.....	40	RC-100BZ	Omnistat-Z, Heat Pump	41
66A00-color	OmniTouch 8	57	RC-112B	Omnistat, Two Speed Heat Pump.....	42
67A00-1	OmniTouch Portable 8	57	RC-112BZ	Omnistat-Z, Two Speed Heat Pump.....	42
67A00-2	OmniTouch Portable 10.....	58	RC-122B	Omnistat, Two Stage Heat/Cool.....	42
67A01-1	Docking Cradle for OmniTouch Portable.....	58	RC-122BZ	Omnistat-Z, Two Stage Heat/Cool	42
68A00-1	Network Digital Video Recorder	51	RC-1000-color	Omnistat2 Single Stage Conventional, Heat Pump.....	38
68A01-1	Indoor Dome Camera.....	52	RC-2000-color	Omnistat2 Multistage, Humidity Control	39
68A02-1	Day/Night Color Bullet Camera	52	SA-23	HAI Model Home Wall Display.....	80
68A04-1	Universal Mounting Plate Kit for Network DVR	52	SA-30	HAI Yard Sign.....	80
69A00-1	4 Button Wireless Keypad.....	74			
70A00-1	Two-Way Cellular Communication Center.....	71			
Promo9	Omni LT Kit with Surface Console	22			
Promo9S	Omni LT Kit for Structured Wiring Enclosures	22			
Promo10	Omni LT Kit.....	22			
Promo10S	Omni LT for Kit for Structured Wiring Enclosures	22			
Promo11	Omni LT Starter Kit	22, 82			
Promo12e	Omni Ile Kit with Flush Console	20			
Promo12eS	Omni Ile for Structured Wiring Kit with Flush Console	20			
Promo13e	Omni Ile Kit in Enclosure with Snap-Link	20			
Promo13eS	Omni Ile Kit for Structured Wiring				



Index by Product Type

Description

Part

Pg

Description

Part

Pg



Home Control Systems

OmniPro II Controllers and Promo Kits

OmniPro II Board Only	20A00-21	19
OmniPro II Commercial Controller	20A00-5	19
OmniPro II Controller	20A00-2	19
OmniPro II Controller for Structured Wiring Enclosures	20A00-8	19
OmniPro II for Structured Wiring Kit with Flush Console	Promo 15S.....	19
OmniPro II Kit with Flush Console	Promo 15	19
OmniPro II Starter Kit	Promo 16	19, 82

Omni Ile Controllers and Promo Kits

Omni Ile Board Only	20A00-53	20
Omni Ile Controller	20A00-50	20
Omni Ile Controller for Structured Wiring Enclosures	20A00-52	20
Omni Ile for Structured Wiring Kit with Flush Console	Promo 12eS.....	20
Omni Ile for Structured Wiring with Snap-Link	Promo 13eS.....	20
Omni Ile Kit in Enclosure with Snap-Link	Promo 13e.....	20
Omni Ile Starter Kit	Promo 14e.....	20, 82
Omni Ile with Flush Console	Promo 12e.....	20

Omni LT Controllers and Promo Kits

Omni LT Board Only	21A00-2	21
Omni LT Controller	21A00-1	21
Omni LT for Structured Wiring Enclosures	21A00-11	21
Omni LT for Structured Wiring Enclosures	Promo 9S.....	22
Omni LT Kit	Promo 10	22
Omni LT Kit for Structured Wiring Enclosures	Promo 10S.....	22
Omni LT Kit with Surface Console	Promo 9	22
Omni LT Starter Kit	Promo 11	22, 82

Lumina Products

Lumina	44A00-1	26
Lumina Mode Switch	38A00-3	26, 59
Lumina Pro	44A00-2	26

OmniPro II Spanish

OmniPro II Spanish	20A00-42	28
OmniPro II Spanish for Structured Wiring Enclosures	20A00-44	28



Lighting Control

HAI Lighting Control Products

1000W UPB™ Dimmer Switch	55A00-1 color.....	31
1500W UPB™ Dimmer Switch	55A00-2 color.....	31
1500W Wallplate, Ivory	55A02-2	31
1500W Wallplate, White	55A02-1	31
15A Relay Switch	40A00-1	32
2400W UPB™ Dimmer Switch	55A00-3 color.....	31
2400W Wallplate, Ivory	55A03-2	31
2400W Wallplate, White	55A03-1	31
600W UPB™ Non-Dimming Switch	35A00-3	31
600W UPB™ Dimmer Switch	35A00-1	31
Auxiliary Switch	37A00-1	32
Custom Legend Kit for Scene or House Status Switch	38A06-2	33
House Status Switch		
Color Change Kit	35A05-color code CS	34
House Status Switch, 8 Button	38A00-2	33
Phase Coupler	39A00-1	34
Scene Switch and Lumina Mode Switch Color Change Kit	35A04-color code CS	34
Scene Switch Remote	38A14-1	33
Scene Switch, 6 Button	38A00-1	33
Switch Color Change Kit	35A14-color code CS	34
Table Top Scene Switch Cradle	38A15-color.....	32
UPB™ Appliance Module	60A00-1	32
UPB™ Lamp Module	59A00-1	32
UPB™ Powerline Interface Module & Cable	36A00-1	34

Index by Product Type



Description

Part

Pg

Description

Part

Pg



Energy Management

Omnistat2 Products & Accessories

Omnistat 2 Ethernet Module	65A09-1	40
Omnistat2 Multistage, Humidity Control	RC-2000 color	39
Omnistat2 Remote Sensor Module	65A12-1	40
Omnistat2 Single Stage Conventional, Heat Pump	RC-1000 color	38
Omnistat2 Zigbee Module	65A10-1	40
Omnistat2 Zigbee Transceiver	65A13-1	40

Omnistat & Omnistat-Z Products, Accessories

Flush Mount Remote Indoor Temp Sensor	23A00-2	42
Omnistat Heat Pump	RC-100B	41
Omnistat Single Stage Heat/Cool	RC-80B	41
Omnistat Single Stage Heat/Cool for Zoned Systems	RC-90B	41
Omnistat Two Speed Heat Pump	RC-112B	42
Omnistat-Z Heat Pump	RC-100BZ	41
Omnistat-Z Single Stage Heat/Cool	RC-80BZ	41
Omnistat-Z Single Stage Heat/Cool for Zoned Systems	RC-90BZ	41
Omnistat-Z Two Speed Heat Pump	RC-112BZ	42
Surface Mount Remote Temp Sensor	23A00-1	42
Thermostat Isolation Module	29A00-1	42
Thermostat Power Supply Module	30A00-1	42

Energy Management Accessories

Extended Range Indoor/Outdoor Temperature Sensor	31A00-7	43
Extended Range Indoor/Outdoor Temperature Sensor	31A00-8	43
PESM	1101A	43
Water Temperature Sensor	14A00-8	43



Whole Home Audio

Hi-Fi by HAI Products

Hi-Fi by HAI 4 Zone, 4 Source Kit for Structured Wiring Enclosures	62A00-2	47
Hi-Fi by HAI 4 Zone, 4 Source Kit with Enclosure	62A00-1	47
Hi-Fi by HAI 4 Zone, 4 Source Main Board Assembly	62A01-1	48
Hi-Fi by HAI Expansion Kit	65A12-1	47
Hi-Fi by HAI Retractable Cable	62A13-1	48
Hi-Fi by HAI Retractable Cable	62A14-1	48
IR Flasher	62A08-1	49
Power Supply	62A07-1	49
Programmable Remote Control	62A06-1	47
Remote Control	62A05-1	47
Remote Input Module (RIM)	62A04-1	48
RIM Color Change Kit	62A10-1 color	49
Universal Mounting Plate	20A07-2	49
Vented Enclosure	62A09-1	49
Volume-Source Control (VSC)	62A03-1	48
VSC Color Change Kit	62A11-1 color	49
Zone Amplifier Card (ZAC)	62A02-1	48



Surveillance

HAI Surveillance

Day/Night Color Bullet Camera	68A02-1	52
Indoor Dome Camera	68A01-1	52
Network Digital Video Recorder (DVR)	68A00-1	51
Universal Mounting Plate Kit for Network Digital Video Recorder	68A04-1	52



Interface Options

Touchscreens & Accessories

Docking Cradle for OmniTouch Portable	67A01-1	58
---------------------------------------	---------	----



Index by Product Type

Description	Part #	Pg #	Description	Part #	Pg #
OmniTouch 5.7	53A00-1	56	Snap-Link	1120	62
OmniTouch 5.7e	53A00-2	56	Snap-Link Mobile	1120M	65
OmniTouch 5.7(e) Color			Software Combo	1110	67
Change Kit	53A05-colorcode	56	Spanish Dealer PC Access		
OmniTouch 8	66A00-color	57	Software	1105WSP	66
OmniTouch Portable 10	67A00-2	58	Web-Link II	1108	67
OmniTouch Portable 8	67A00-1	57			
Spanish OmniTouch 5.7	53A00-3	56			
Touchscreen Hub Board Only	32A31-2	59			
Touchscreen Hub Replacement					
Power Supply	106080	59			
Touchscreen Hub with Video					
in Enclosure	32A30-1	59			
Touchscreen Hub with Video,					
for Structured Wiring Enclosures	32A30-2	59			
Touchscreen Hub, No Video,					
Enclosure	32A30-3	59			
Touchscreen Hub, No Video, for					
Structured Wiring Enclosures	32A30-4	59			
Video Encoder	32A32-1	59			
Consoles & Interface Accessories					
Flush Mount Kit	33A00-3	60			
HAI Access Control Keypad	54A00-1	60			
Lumina Keypad	33A00-19	60			
Lumina Keypad with Built-in					
Speaker/Microphone	33A00-20	60			
Lumina Mode Switch	38A00-3	60			
Omni Console	33A00-1	60			
Omni Console with Built-in					
Speaker/Microphone	33A00-4	60			
Telephone Access Kit	44A01-1	60			
HAI Software					
Dealer PC Access Software	1105W	66			
End User PC Access Software	1106W	66			
Home Control for Windows					
Media Center	1109	67			
Lumina PC Access	1111	66			
Pronto Link for Phillips	1125	65			



Accessories

Omni & Lumina Accessories

12V 5 AH Battery	44A02-1	70
16 Zone Hardwire Expander	10A06-1	69
16 Zone/16 Output Expansion	17A00-9	69
24V 40 VA Transformer	44A03-1	70
4 Relay Module	10A07-1	70
8 Relay Module	19A00-1	70
ALC Interface, 1 branch	25A00-1	72
ALC Interface, 4 branch	25A00-2	72
Enclosure Lock & 2 Keys	21A06-1	70
Expansion Board Only	17A00-8	69
Expansion Enclosure	17A00-1	69
Flush Speaker Microphone	28A00-2	72
Lumina Chip Upgrade	20A04-21UPG.....	72
Lumina Pro Chip Upgrade	20A04-22UPG.....	72
Mounting Plate for Omni LT	21A07-2	69
Omni II Chip Upgrade	20A04-1UPG.....	72
Omni IIe Chip Upgrade	20A04-50UPG.....	72
Omni LT Chip Upgrade	21A03-1UPG.....	72
Omni LT Expansion Module	22A00-1	69
OmniPro II Chip Upgrade	20A04-2UPG.....	72
RS-232/RS-485 Serial Board	10A17-1	70
Spanish OmniPro II Chip Upgrade	20A04-42UPG.....	72
Surface Speaker Microphone	28A00-1	72
Telephone Access Kit	44A01-1	70
Two Way X-10 Transceiver Kit	10A09-7	72
Two-Way Cellular		
Communication Center	70A00-1	71
Two-Way Voice Module	10A11-1	71
Universal Mounting Plate	20A07-2	69



Description	Part #	Pg #
Wireless Receiver for GE InterLogix	42A00-1	72
Wireless Products		
4 Button Keyfob	48A00-1	74
4 Button Wireless Keypad	69A00-1	74
64 Zone Wireless Receiver	45A00-1	73
Door/Window Transmitter	46A00-1	74
Glass Break	61A00-1	74
Mini Contact	58A00-1	73
Panic/Alert Pendant	50A00-1	74
Quad Pet Immune Motion Detector	47A00-1	74
Vanishing Mini Contact	57A00-1	73
Wireless Received Door Contacts	56A00-1	73
Cables		
HAI Lighting Control (HLC)		
Expansion Kit for Omni LT	36A10-1	75
Hi-Fi by HAI Retractable Cable	62A13-1	75
Hi-Fi by HAI Retractable Cable	62A14-1	75
OmniTouch Loader Kit	32A09-1	75
Serial Connectivity Cable	36A05-4	75
Serial PC Cable	21A05-2	75
UPB™ Powerline Interface Module to Computer Cable	36A05-2	75
Demo Adapter Kits & Demo Cases		
Demo Adapter Kit	18A00-5	76
Lumina Demo Case	18A00-14	76
Omni LT Demo Adapter Kit	27A00-2	76
OmniPro II Demo with OmniTouch and HAI Lighting Control	18A00-13	76



Notes

The logo for HAI 100, featuring the number "100" in white on a light blue background and the "HAI" logo in white on a dark blue background. The "HAI" logo includes a stylized white house roof above the letters.

*HAI—a proven track record of reliable, affordable,
and award winning products since 1985.*



visit us at
www.homeauto.com

QUICK REFERENCE CONTACT INFORMATION:

Training:	http://www.homeauto.com/training training@homeauto.com
Distribution Support:	sales@homeauto.com
Technical Support:	1-800-229-7256, x 400 support@homeauto.com
Sales Territory Managers:	http://www.homeauto.com/contact sales@homeauto.com



HOME CONTROL SYSTEMS



LIGHTING CONTROL



ENERGY MANAGEMENT



WHOLE HOME AUDIO



SURVEILLANCE



INTERFACE OPTIONS



ACCESSORIES

